

REVOLUTION IN MOTION®



PART NOMENCLATURE

UEL	PL	3/4	MFG1
Bearing Insert	Housing	Bore Diameter	Suffix
Bearing Insert	Housing	Suffix	
AR Narrow inner ring, set screw	FU Four-Bolt square flange	M Black oxide coating	
JEL Narrow inner ring, locking collar	FLU Two-bolt diamond flange	FG1 Food grade solid lube grease	
UC Wide inner ring, set screw	FUX Four-Bolt square flange	S Small housing	
UEL Wide inner ring, locking collar	FLUX Two-bolt diamond flange		
	P Two-bolt pillow block		
	PL Two-bolt pillow, low profile		

ULTRA CLASS™ SERIES MOUNTED BEARING UNITS

PRODUCT INTERCHANGE MATRIX

Series	Dodge	SKF	SealMaster	Browning	Fafnir
ARFLU	-	-	VFT, SCJT	VF2S-100	SCJT
ARP	-	-	VP	VPS-100	SAS
UCFLU	F2B-SC	FYT-TM	SFT, RFT	VF2S-200	YCJT
UCFLUX	F2B-SCM	-	MSFT	VF2S-300	-
UCFU	F4B-SC	FY-TM	SF, RF	VF4S-200	YCJT
UCFUX	F4B-SCM	FYM-TM	MSF, MRF	VF4S-300	YCJM
UCP	P2B-SC	SY	NP, RP	VPS-200	YAS
UCPL	P2B-SCB	SYH	NPL	VPLS-200	YAK
UCPX	P2B-SCM	-	MP	VPS-300	YASM
UELFLU	F2B-SXR	FYT-WM	RFT-E	VF2E-200	RCJT
UELFU	F4B-SXR	FY-WM	RF-E	VF4E-200	RCJT
UELPL	P2B-SXRB	SYH-X	RPL-E	VPLE-200	RAK

FEATURES AND BENEFITS

Features	NTN	Dodge	SKF	SealMaster	Browning	Fafnir	Benefits to User
Land riding seal includes metallic "flinger" with fins	✓						<ul style="list-style-type: none"> Actively repels contaminants for longer bearing life Consistent sealing performance
Ball-point set screw	✓						<ul style="list-style-type: none"> Minimizes shaft damage Allows for quick & easy bearing removal
Black oxide coating	✓			✓			<ul style="list-style-type: none"> Provides superior corrosion resistance over standard bearing inserts
Solid heavy-duty base pillow blocks	✓			✓			<ul style="list-style-type: none"> Resists cracking Improved shock stability reduces deflection and dampens vibration
Permanent metallic plate with complete part number	✓			✓			<ul style="list-style-type: none"> Durable, permanent identification
Optimal outer ring to housing fit	✓		✓			✓	<ul style="list-style-type: none"> Eliminates need for anti-rotation device Alleviates misalignment concerns

GLOBAL PRESENCE

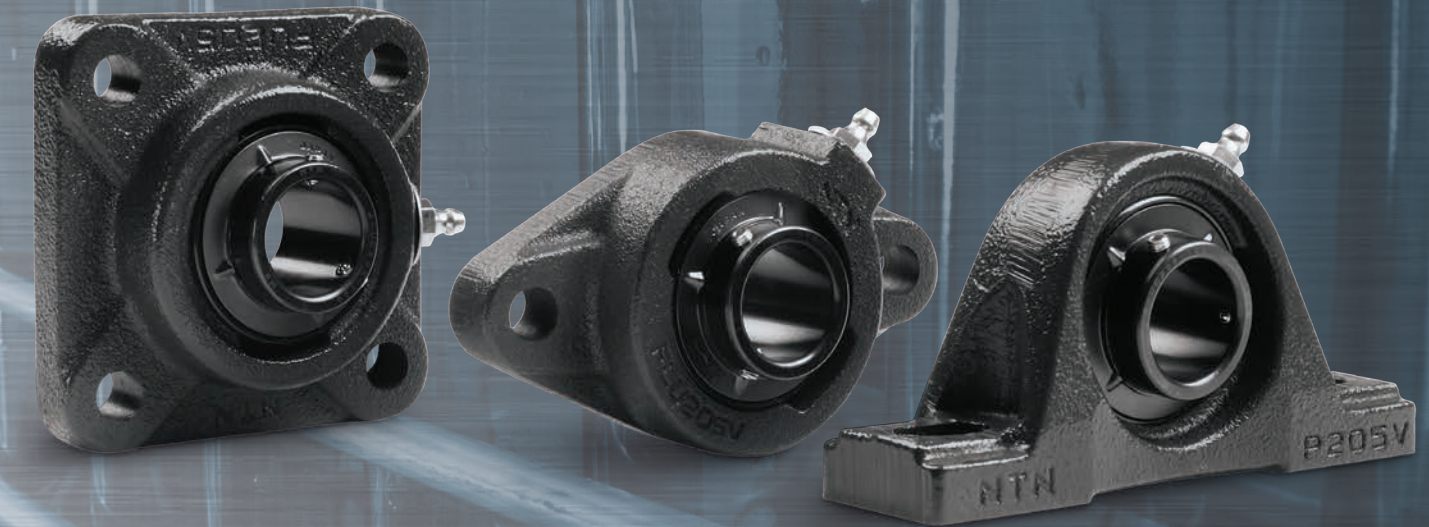
EXPANSIVE PRODUCT LINE

SUPPORT FOR WIDE RANGE OF INDUSTRIES

COMMITMENT TO INNOVATION



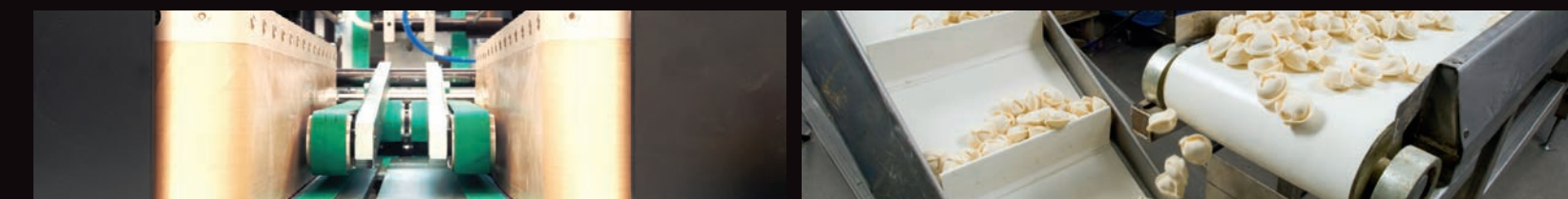
NTN is one of the world's largest bearing producers. With manufacturing plants throughout the world, NTN is a leading bearing supplier to both the industrial and automotive markets. Founded in 1918, NTN has long been recognized for the most stringent quality standards and counts some of the most recognized industrial brand names as its customers.



www.ntnamerica.com



NTN HEADQUARTERS 1600 E. Bishop Ct., Mt. Prospect, IL 60056-7604 | 847.298.7500 | 800.323.2358



MTU1210-1

www.ntnamerica.com



TWO-BOLT PILLOW BLOCK

- Pillow block offers solid base construction for optimum load and shock stability
- All models include black oxide coating for superior environmental protection
- Mounting configurations available for light, standard and intermediate duty

COMPOSITION

Housing: Cast Iron | Insert: 52100 Steel | Grease Type: Shell Alvania No. 3



TWO-BOLT FLANGE UNIT

- Ball-point set screw provides excellent shaft tightening characteristics without damage to mounting surfaces
- Two-bolt configurations compatible with industry equivalents
- Inserts available in set screw and eccentric lock styles

COMPOSITION

Housing: Cast Iron | Insert: 52100 Steel | Grease Type: Shell Alvania No. 3



FOUR-BOLT FLANGE UNIT

- Units can be customized to include food grade solid lube for fine particle and pharmaceutical applications
- Four-bolt configurations compatible with industry equivalents
- All models include seal and flinger design that prevents particles from reaching inner ball bearings and raceways

COMPOSITION

Housing: Cast Iron | Insert: 52100 Steel | Grease Type: Shell Alvania No. 3

NTN Number	Bore Dia.	Length	Width	Height	Bolt Hole Cntr to Cntr	Base to Shaft Cntr
Two-Bolt Pillow Block, Light Duty						
ARP-1/2	1/2	5	1-1/2	2-7/16	3-5/8	1-3/16
ARP-5/8	5/8	5	1-1/2	2-7/16	3-5/8	1-3/16
ARP-3/4	3/4	5	1-1/2	2-9/16	3-25/32	1-5/16
ARP-1	7/8	5-1/2	1-1/2	2-25/32	4-1/8	1-7/16
ARP-1.1/4S	1	6-1/2	1-7/8	3-9/32	4-5/8	1-11/16
Standard Duty, Pillow Block, Standard Duty						
UCP-20M	20mm	5	1-1/2	2-9/16	3-25/32	1-5/16
UCP-25M	25mm	5-1/2	1-1/2	2-25/32	4-1/8	1-7/16
UCP-30M	30mm	6-1/2	1-7/8	3-9/32	4-5/8	1-11/16
UCP-35M	35mm	6-9/16	1-7/8	3-21/32	5-1/8	1-7/8
UCP-40M	40mm	7-1/4	2-1/8	3-27/32	5-3/8	1-15/16
UCP-1/2M	1/2	5	1-1/2	2-7/16	3-5/8	1-3/16
UCP-5/8M	5/8	5	1-1/2	2-7/16	3-5/8	1-3/16
UCP-3/4M	3/4	5	1-1/2	2-9/16	3-25/32	1-5/16
UCP-7/8M	7/8	5-1/2	1-1/2	2-25/32	4-1/8	1-7/16
UCP-1M	1	5-1/2	1-1/2	2-25/32	4-1/8	1-7/16
UCP-1.1/8M	1-1/8	6-1/2	1-7/8	3-9/32	4-5/8	1-11/16
UCP-1.3/16M	1-3/16	6-1/2	1-7/8	3-9/32	4-5/8	1-11/16
UCP-1.1/4SM	1-1/4	6-1/2	1-7/8	3-9/32	4-5/8	1-11/16
UCP-1.1/4M	1-1/4	6-9/16	1-7/8	3-21/32	5-1/8	1-7/8
UCP-1.3/8M	1-3/8	6-9/16	1-7/8	3-21/32	5-1/8	1-7/8
UCP-1.7/16M	1-7/16	6-9/16	1-7/8	3-21/32	5-1/8	1-7/8
UCP-1.1/2M	1-1/2	7-1/4	2-1/8	3-27/32	5-3/8	1-15/16
UCP-1.5/8M	1-5/8	7-15/32	2-1/8	4-3/16	5-7/8	2-1/8
UCP-1.11/16M	1-11/16	7-15/32	2-1/8	4-3/16	5-7/8	2-1/8
UCP-1.3/4M	1-3/4	7-15/32	2-1/8	4-3/16	5-7/8	2-1/8
UCP-1.15/16M	1-15/16	8-1/8	2-3/8	4-1/2	6-7/32	2-1/4
UCP-2M	2	8-5/8	2-3/8	4-31/32	6-15/16	2-1/2
UCP-2.3/16M	2-3/16	8-5/8	2-3/8	4-31/32	6-15/16	2-1/2
UCP-2.7/16M	2-7/16	9-1/2	2-3/4	5-7/16	7-13/32	2-3/4
Two-Bolt Pillow Block, Intermediate Duty						
UCPX-1M	1	6-1/2	1-7/8	3-9/32	4-5/8	1-11/16
UCPX-1.3/16M	1-3/16	6-9/16	1-7/8	3-21/32	5-1/8	1-7/8
UCPX-1.7/16M	1-7/16	7-1/16	1-7/8	4-1/8	5-3/8	2-1/8
UCPX-1.1/2M	1-1/2	7-15/32	2-1/8	4-3/16	5-7/8	2-1/8
UCPX-1.11/16M	1-11/16	8-1/8	2-3/8	4-1/2	6-7/32	2-1/4
UCPX-1.3/4M	1-3/4	8-1/8	2-3/8	4-1/2	6-7/32	2-1/4
UCPX-1.15/16M	1-15/16	8-5/8	2-3/8	4-31/32	6-15/16	2-1/2
UCPX-2M	2	8-5/8	2-3/8	4-31/32	6-15/16	2-1/2
UCPX-2.3/16M	2-3/16	9-1/2	2-3/4	5-7/16	7-13/32	2-3/4
UCPX-2.7/16M	2-7/16	10-15/32	2-27/32	6-1/16	8	3
UCPX-2.1/2M	2-1/2	10-15/32	2-27/32	6-1/16	8	3
UCPX-2.15/16M	2-15/16	13	3-1/2	7	9	3-1/2

Additional size, mount and lubrication configurations available.

NTN Number	Bore Dia.	Length	Width	Height	Bolt Hole Cntr to Cntr	Base to Shaft Cntr
Two-Bolt Pillow Block, Light Duty						
UELP-1/2M	1/2	5	1 1/2	2 7/16	3-5/8	1-3/16
UELP-5/8M	5/8	5	1 1/2	2 7/16	3-5/8	1-3/16
UELP-3/4M	3/4	5	1 1/2	2 9/16	3-25/32	1-5/16
UELP-7/8M	7/8	5-1/2	1 1/2	2 25/32	4-1/8	1-7/16
UELP-1M	1	5-1/2	1 1/2	2 25/32	4-1/8	1-7/16
UELP-1.1/8M	1-1/8	6-1/2	1 7/8	3 9/32	4-5/8	1-11/16
UELP-1.3/16M	1-3/16	6-1/2	1 7/8	3 9/32	4-5/8	1-11/16
UELP-1.1/4SM	1-1/4	6-1/2	1 7/8	3 9/32	4-5/8	1-11/16
UELP-1.1/4M	1-1/4	6-9/16	1 7/8	3 21/32	5-1/8	1-7/8
UELP-1.3/8M	1-3/8	6-9/16	1 7/8	3 21/32	5-1/8	1-7/8
UELP-1.7/16M	1-7/16	6-9/16	1 7/8	3 21/32	5-1/8	1-7/8
UELP-1.1/2M	1-1/2	7-1/4	2 1/8	3 27/32	5-3/8	1-15/16
UELP-1.5/8M	1-5/8	7-15/32	2 1/8	4 3/16	5-7/8	2-1/8
UELP-1.11/16M	1-11/16	7-15/32	2 1/8	4 3/16	5-7/8	2-1/8
UELP-1.3/4M	1-3/4	7-15/32	2 1/8	4 3/16	5-7/8	2-1/8
UELP-1.15/16M	1-15/16	8-1/8	2 3/8	4 1/2	6-7/32	2-1/4
UEL2M	2	8-5/8	2 3/8	4 31/32	6-15/16	2-1/2
UEL2.3/16M	2-3/16	8-5/8	2 3/8	4 31/32	6-15/16	2-1/2
UEL2.7/16M	2-7/16	9-1/2	2 3/4	5 7/16	7-13/32	2-3/4
Two-Bolt Pillow Block, Standard Duty, Narrow Collar						
JELP-1/2M	1/2	5	1-1/2	2 7/16	3-5/8	1-3/16
JELP-5/8M	5/8	5	1-1/2	2 7/16	3-5/8	1-3/16
JELP-3/4M	3/4	5	1-1/2	2 9/16	3-25/32	1-5/16
JELP-7/8M	7/8	5-1/2	1-1/2	2 25/32	4-1/8	1-7/16
JELP-1M	1	5-1/2	1-1/2	2 25/32	4-1/8	1-7/16
JELP-1.1/8M	1-1/8	6-1/2	1-7/8	3 9/32	4-5/8	1-11/16
JELP-1.3/16M	1-3/16	6-1/2	1-7/8	3 9/32	4-5/8	1-11/16
JELP-1.1/4SM	1-1/4	6-1/2	1-7/8	3 9/32	4-5/8	1-11/16
JELP-1.1/4M	1-1/4	6-9/16	1-7/8	3 21/32	5-1/8	1-7/8
JELP-1.3/8M	1-3/8	6-9/16	1-7/8	3 21/32	5-1/8	1-7/8
JELP-1.7/16M	1-7/16	6-9/16	1-7/8	3 21/32	5-1/8	1-7/8
JELP-1.1/2M	1-1/2	7-1/4	2-1/8	3 27/32	5-3/8	1-15/16
JELP-1.5/8M	1-5/8	7-15/32	2-1/8	4 3/16	5-7/8	2-1/8
JELP-1.11/16M	1-11/16	7-15/32	2-1/8	4 3/16	5-7/8	2-1/8
JELP-1.3/4M	1-3/4	7-15/32	2-3/8	4 3/16	5-7/8	2-1/8
JELP-1.15/16M	1-15/16	8-1/8	2-3/8	4 1/2	6-7/32	2-1/4
JELP-2M	2	8-5/8	2-3/8	4 31/32	6-15/16	2-1/2
JELP-2.3/16M	2-3/16	8-5/8	2-3/8	4 31/32	6-15/16	2-1/2

NTN Number	Bore Dia.	Length	Width	Height	Bolt Hole Cntr to Cntr
Two-Bolt Flange, Light Duty					
ARFLU-1/2	1/2	3-27/32	2-13/32	1-19/64	3
ARFLU-5/8	5/8	3-27/32	2-13/32	1-19/64	3
ARFLU-3/4	3/4	4-7/16	2-13/32	1-29/64	3-17/32
ARFLU-1	1	4-29/32	2-3/4	1-33/64	3-57/64
ARFLU-1.3/16	1-3/16	5-19/32	3-9/32	1-39/64	4-19/32
ARFLU-1.1/4S	1-1/4	5-19/32	3-9/32	1-39/64	4-19/32
ARFLU-1.7/16	1-7/16	6-5/32	3-25/32	1-53/64	5-1/8
Two-Bolt Flange, Standard Duty					
UCFLU-20M	20mm	3-27/32	2-13/32	1-19/64	3
UCFLU-25M	25mm	4-29/32	2-3/4	1-17/32	3-57/64
UCFLU-30M	30mm	5-19/32	3-9/32	1-21/32	4-19/32
UCFLU-35M	35mm	6-5/32	3-25/32	1-53/64	5-1/8
UCFLU-40M	40mm	6-25/32	4-1/8	2-9/64	5-21/32
UCFLU-1/2M	1/2	3-27/32	2-13/32	1-19/64	3
UCFLU-5/8M	5/8	3-27/32	2-13/32	1-19/64	3
UCFLU-3/4M	3/4	4-7/16	2-13/32	1-15/32	3-17/32
UCFLU-7/8M	7/8	4-29/32	2-3/4	1-17/32	3-57/64
UCFLU-15/16M	15/16	4-29/32	2-3/4	1-17/32	3-57/64
UCFLU-1M	1	4-29/32	2-3/4	1-17/32	3-57/64
UCFLU-1.1/8M	1-1/8	5-19/32	3-9/32	1-21/32	4-19/32
UCFLU-1.3/16M	1-3/16	5-19/32	3-9/32	1-21/32	4-19/32
UCFLU-1.1/4M	1-1/4	6-5/32	3-25/32	1-53/64	5-1/8
UCFLU-1.3/8M	1-3/8	6-5/32	3-25/32	1-53/64	5-1/8
UCFLU-1.7/16M	1-7/16	6-5/32	3-25/32	1-53/64	5-1/8
UCFLU-1.1/2M	1-1/2	6-25/32	4-1/8	2-9/64	5-21/32
UCFLU-1.11/16M	1-11/16	7-3/32	4-3/8	2-9/64	5-27/32
UCFLU-1.3/4M	1-3/4	7-3/32	4-3/8	2-9/64	5-27/32
UCFLU-1.15/16M	1-15/16	7-15/32	4-9/16	2-25/64	6-3/16
UCFLU-2M	2	8-17/32	5-9/32	2-17/32	7-1/4
Two-Bolt Flange, Intermediate Duty					
UCFLUX-1M	1	5-19/32	3-9/32	1-21/32	4-19/32
UCFLUX-1.3/16M	1-3/16	6-5/32	3-25/32	1-53/64	5-1/8
UCFLUX-1.7/16M	1-7/16	6-25/32	4-1/8	2-9/64	5-21/32
UCFLUX-1.1/2M	1-1/2	7-3/32	4-3/8	2-9/64	5-27/32
UCFLUX-1.11/16M	1-11/16	7-15/32	4-9/16	2-25/64	6-3/16
UCFLUX-1.3/4M	1-3/4	7-15/32	4-9/16	2-25/64	6-3/16
UCFLUX-1.15/16M	1-15/16	8-17/32	5-9/32	2-17/32	7-1/4
UCFLUX-2M	2	8-17/32	5-9/32	2-17/32	7-1/4

Additional size, mount and lubrication configurations available.

NTN Number	Bore Dia.	Length	Width	Height	Bolt Hole Cntr to Cntr
Two-Bolt Flange, Standard Duty, Wide Collar					
UELFLU-1/2M	1/2	3-27/32	2 13/32	1-21/32	3
UELFLU-5/8M	5/8	3-27/32	2 13/32	1-21/32	3
UELFLU-3/4M	3/4	4-7/16	2 13/32	1-51/64	3-17/32
UELFLU-7/8M	7/8	4-29/32	2 3/4	1-13/16	3-57/64
UELFLU-1M	1	4-29/32	2 3/4	1-13/16	3-57/64
UELFLU-1.1/8M	1-1/8	5-19/32	3 9/32	1-31/32	4-19/32
UELFLU-1.3/16M	1-3/16	5-19/32	3 9/32	1-31/32	4-19/32
UELFLU-1.1/4SM	1-1/4	5-19/32	3 9/32	1-31/32	4-19/32
UELFLU-1.1/4M	1-1/4	6-5/32	3 25/32	2-3/32	5-1/8
UELFLU-1.3/8M	1-3/8	6-5/32	3 25/32	2-3/32	5-1/8
UELFLU-1.7/16M	1-7/16	6-			