

TSUBAKI[®]

DIVISIONAL PRODUCT GUIDE



ANSI



Large & Small Pitch



Heavy, Super & Ultra



Double Pitch



Leaf

Attachment



Carbon Steel & Stainless Steel

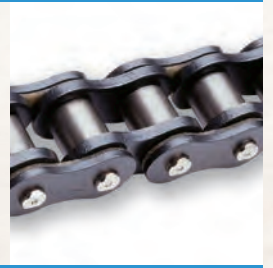


Hollow Pin

Lube-Free



LAMBDA®



Xceeder® (Felt Seal)

Corrosion Resistant



Stainless Steel



Nickel-Plated



Neptune®

Plastic



Industrial Plastic Poly Steel

Specialty



British Standard



Energy Series® (Oil & Gas)



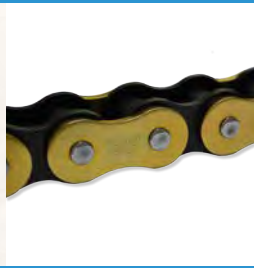
Thermoformer



Vacuum Wrapper & Gripper



Pin Oven



Titan™



Free-Flow



Made-to-Order

Drive



Straight Sidebars & Offset Sidebars

Roller Conveyor



Roller Conveyors



Extended Pins & High Sidebars



A and K Attachments



G Attachments



M Attachments

Apron Conveyor



Style A and B

Bar & Pin



Linear Fixed & Double Flex

Welded Steel



Welded Steel

Steel Bushed



Steel Bushed



Bucket Elevator

Sealed



Patented Sealed Joint

Drop Forged Rivetless



Drop Forged Rivetless



Barloop



Caterpillar Drive

Specialty



Bi-Planar



Flanged Rollers and Cottered Pins



Forged Continuous & Straight Pull Miner



Outboard Roller



Water Screen

SPROCKETS



Roller Chain

Stainless Steel

Engineering Class

Made-To-Order



Double Single

Double Pitch

Multi-Strand

Idler



Split Taper

Steel Split

Double Plus®

SMART TOOTH™ with patented Wear Indicators

PT COMPONENTS

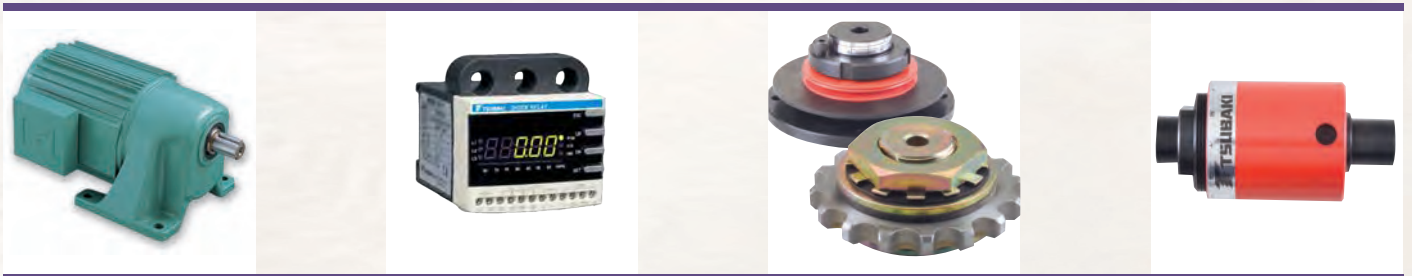


Overrunning Clutches & Backstops

Power Cylinder (Electric Actuator)

POWER-LOCK®

Couplings



Gear Motor

Shock Relay/Overload Protection

Torque Shield & Torque Limiter

Linear Shield

MONO - Molded Plastic



Micro-Sized



EASYTRAX



QUICKTRAX



UNIFLEX Advanced

VARIO - Customizable Basic, Modular & Hybrid



K Series



MC Series



MK Series

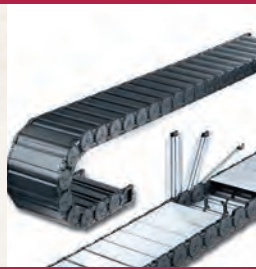


XL Series

Tube - Enclosed



TKA Series



MT Series



S Series



CONDUFLEX

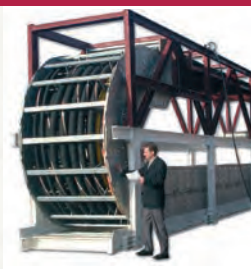
Steel - Heavy Duty



LS Series

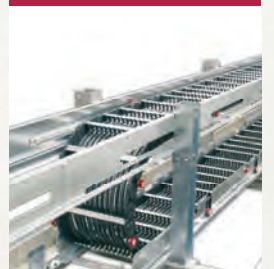


S/SX Series



Super-Duty

Long Travel



RCC - Rolling Carriage

3D Motion



ROBOTRAX

Turn-Key



MC Series

Cables



Continuous-Flex

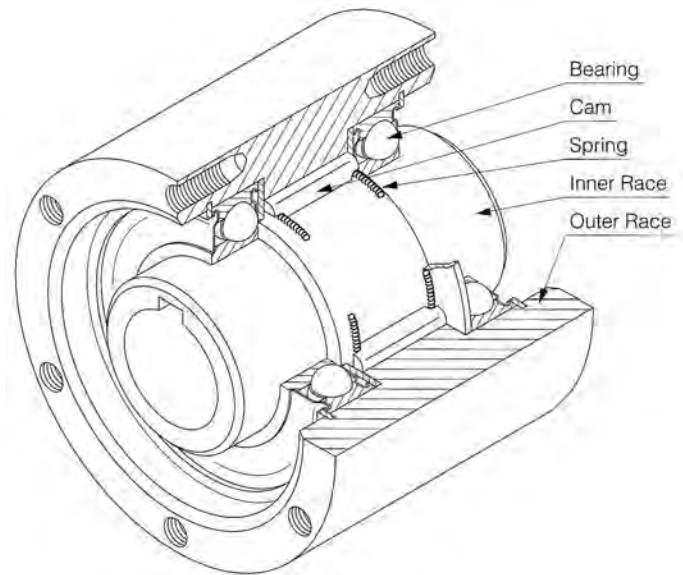
Accessories



Guide Channels

U.S. Tsubaki now offers an extensive inventory of Overrunning and Indexing Clutches and Backstops

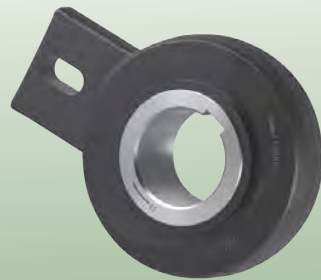
Tsubaki is bringing over 50 years of global experience in the design and manufacture of clutch products to the Americas. The product variations shown below feature a series of unique cam designs to maximize the torque rating, achieve low speed lift-off to minimize wear in the overrunning condition and provide long maintenance free service. Simple and cost effective, Tsubaki clutches transmit the load in one direction (freewheel) and stop and hold any reversing loads to prevent damage.



Backstopping



BS/BS-HS



BSEU

High Speed Backstopping



BR-HT

Long-Life Modular Design



BREU

Indexing

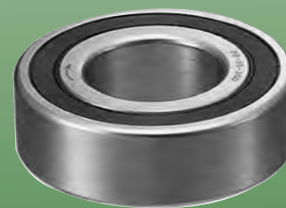


MIUS



MZEU

One-Way Bearing



BB

For more information on our clutch product offerings, pricing or to request a catalog, please contact us:
800-323-7790 or visit www.ustsubaki.com

Unmatched Quality, Dependability, Service & Support



SMART TOOTH™
Sprockets



Sealed Joint
Chain Options



Steel Cable
Carriers



Backstops &
Overrunning
Clutches



Lube-Free
Lambda® Chain





Continuous-Flex
Cables



Here are just some of Tsubaki's
Premium Problem Solving Products

U.S. Tsubaki Power Transmission Footprint



-  **Production Facilities and Divisions**
-  **USTP Warehouses**

Additional Manufacturing Facilities



World Headquarters
Kyotanabe City, Japan
Most Advanced Chain Facility in the World



Sprocket Manufacturing
Mississauga, Ontario Canada
Specialized Made-to-Order Sprocket Capabilities

Contact Information

U.S. Tsubaki Power Transmission, LLC.
Corporate Headquarters
301 E. Marquardt Drive
Wheeling, IL 60090
Tel: (800) 323-7790
Fax: (847) 459-9515
www.ustsubaki.com

Roller Chain Division
821 Main Street
Holyoke, MA 01040
Tel: (800) 323-7790

Conveyor & Construction
Chain Division
1010 Edgewater Drive
Sandusky, OH 44870
Tel: (800) 537-6140
Fax: (419) 626-5194

Cable & Hose Carrier Division
7100 W. Marcia Rd.
Milwaukee, WI 53223
Tel: (800) 443-4216
Fax: (414) 354-1900