

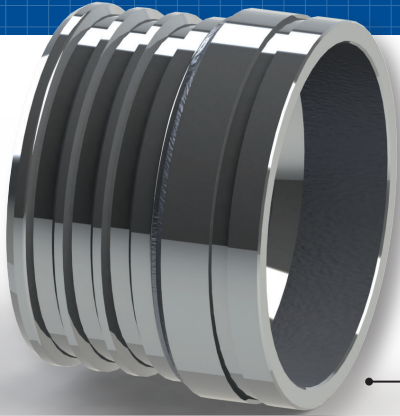


Made in the U.S.A.



HD2 Fluid Transfer System

PT COUPLING COMPANY's new HD2 fluid transfer system offers a quick and economical way to use lay-flat hose in the transfer of fluid. The lay-flat hose is connected to the HD2 bodies by use of segmented bolt clamps or grooved crimp sleeves. HD2 System parts are available in 6 inch through 12 inch sizes.



PT USA has developed new fittings for 6", 8", 10" & 12" lay-flat hose to be used in the fracking industry for water delivery:

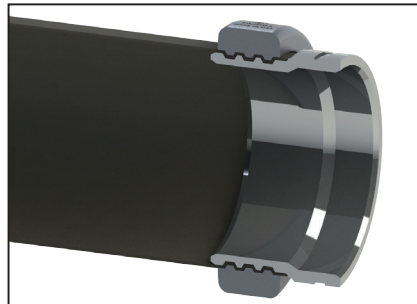
- Fittings are field serviceable
- 6" and 8" fittings are rated up to 200 PSI
- 10" & 12" fittings are rated up to 150 PSI
- Custom anodizing, powder coating or PT z-COR available
- Aluminum bodies and clamps

● **GSHD2** HD2 X VICTAULIC® GROOVE CONNECTION

GSHD2 ASSEMBLED WITH LAY-FLAT HOSE AND **HD2** CLAMP ASSEMBLY



SECTIONED VIEW SHOWING INTERLOCKED HOSE CONNECTION



PTMHD2 ASSEMBLED WITH LAY-FLAT HOSE AND TWO **HD2** CLAMPS



To meet the need for field service ability, PT has developed a segmented bolt clamp assembly for hose retention.

- 6", 8", 10", and 12" are available.

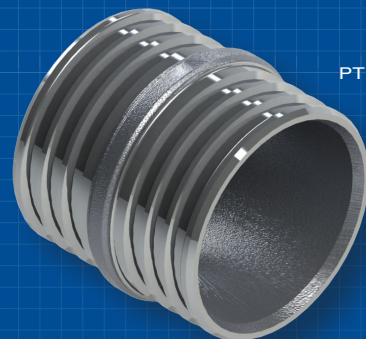
HEAVY DUTY **CHD2** X HD2 SHANK - 6"
*CAM & GROOVE FITTINGS ARE RATED AT 150 PSI ●



FOR PERMANENT RETENTION **GSHD2** ASSEMBLED WITH LAY-FLAT HOSE AND **CHD2** HEAVY DUTY CRIMP SLEEVE ●



PT HOSEMENDER
PTMHD2
HD2 SHANK X
HD2 SHANK



PT Coupling

CAST, MACHINED and ASSEMBLED in the USA / 1-800-654-0320 / WWW.PTCOUPLING.COM



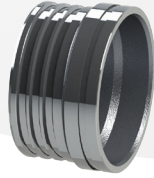
Made in the U.S.A.



PT USA Oil & Gas Products

GSHD2

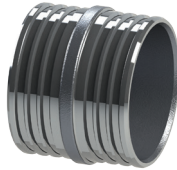
Victaulic® Groove X
HD2 Shank



SIZE	ITEM #	PSI Rated
6"	85640600H2	200
8"	85640800H2	200
10"	85641000H2	150
12"	85641200H2	150

PTHM

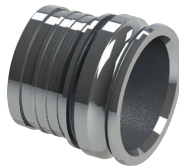
PT Hose Mender
HD2 Shank X
HD2 Shank



SIZE	ITEM #	PSI Rated
6"	85660600H	200
8"	856608001	200
10"	856610001	150
12"	856612001	150

EHD2

Heavy Duty Male
Cam & Groove X
HD2 Shank



SIZE	ITEM #	PSI Rated
6"	1000562H	150

CHD2

Heavy Duty Female Cam
& Groove X HD2 Shank
W/ STA LOK II Cam
Arms & Buna N Seals



SIZE	ITEM #	PSI Rated
6"	1000362H	150

Railroad Tank Car Connections

TCA 40x90° Elbow

4" Adapter x
Female Tank
Car Thread



4" Male NPT X
Female Tank Car
Thread



Frac Sand Transfer

Abrasion & Chemical Resistant
Ductile Iron

45° 40CAL

Extra Heavy
Wall



Part C



CSHD2 Aluminum Crimp Sleeve



SIZE	ITEM #
8"	50525
10"	50530

HD2 HD2 Segmented Bolt Clamp



SIZE	SEC.	ITEM #
6"	3	50561
8"	4	50510
10"	4	50511
12"	5	50524

Product Delivery

SAFETY BUMP - NEW

Aluminum 2", 3" & 4"



SBF



SBM



SBF



SBM

ANTI-STATIC

POLY - Black
Petroleum

SAFETY LOCKS

1", 2", 3" & 4"



SBL

SAFETY BUMP - C'S & E'S

ALUMINUM 4" (also available
in undersized shanks)



SBC



SBE



PT Coupling Company

P.O. Box 3909
1414 East Willow
Enid, OK 73701

North America Toll-Free:
(800) 654-0320
International Phone:
(580) 237-4060



THE ASSOCIATION FOR HOSE AND
ACCESSORIES DISTRIBUTION



Made in U.S.A



Toll-Free Fax: (800) 828-2649 Fax: (580) 237-3435 info@ptcoupling.com www.ptcoupling.com

© 2014 PT Coupling Co.