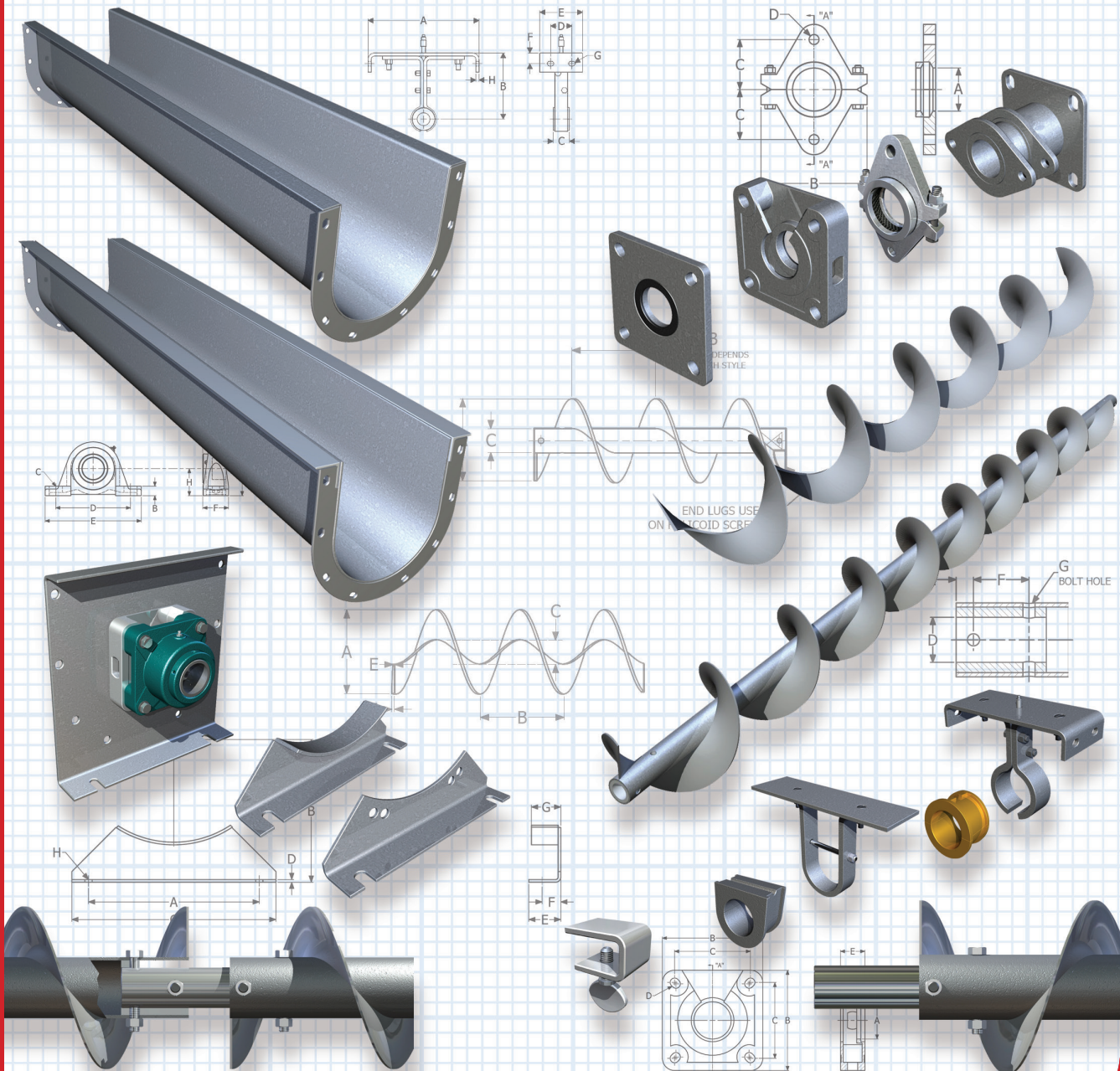




Design  
Engineering  
Manufacturing

# CEMA Stock Components



## **KWS PROFILE**

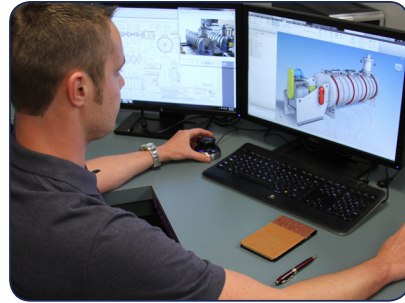
Founded in 1972, KWS Manufacturing Company, Ltd, is the leader in the design and manufacture of conveying equipment for the bulk material handling industry. Our primary Customers are power transmission distributors, end users, engineering firms, system suppliers and original equipment manufacturers (OEMs).

As an ISO 9001 certified manufacturer, KWS provides the highest quality equipment and service to our Customers. The KWS name stands for Knowledge, Workmanship and Solutions. Our large number of repeat Customers shows our commitment to Customer satisfaction. Our quality system ensures that your equipment is designed and manufactured to rigid specifications and validated by exceeding performance expectations.

We also offer complete system design and engineered solutions for our Customers. KWS is one of the largest conveyor manufacturers in North America and has experienced over 500-percent growth in the past ten years.

## **KWS READY-TO-SHIP CEMA STANDARD COMPONENTS**

KWS maintains a large inventory of CEMA (Conveyor Equipment Manufacturing Association) standard components, available for immediate shipment. These standard components are stocked in carbon steel as well as stainless steel construction. Please contact KWS Customer Service for our freight allowance policy.







## CARBON STEEL STOCK COMPONENTS

### FLIGHTING

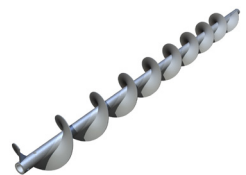


**Helicoid Flighting** is cold rolled from special steel into a continuous helix that produces a work-hardened, smoothly finished flighting surface. Cost-effective helicoid flighting provides superior strength with diameter, pitch and thickness closely controlled.

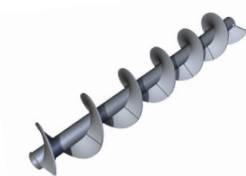


**Sectional Flighting** is manufactured from steel plate and formed into a 360° section of flighting. Sectional flighting is available in heavier thicknesses than helicoid flighting and suitable for more abrasive applications.

### SCREWS

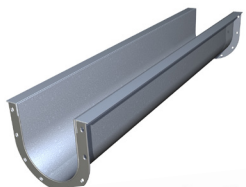


**Helicoid Screws** are manufactured by mounting helicoid flighting on a center pipe and fastening by intermittent welds. Internal collars are inserted in each end and plug welded to accommodate shafts. Screws are structurally reinforced at the ends by end lugs.

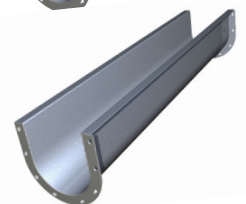


**Sectional Screws** are manufactured by mounting a 360° section of flighting on a center pipe, butt welding each flight together and fastening by intermittent welds. Internal collars are inserted in each end and plug welded to accommodate shafts. Screws are structurally reinforced at the ends by end lugs.

### TROUGHS

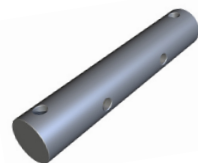


**Angle Flange U-Troughs** are manufactured with structural angle top flanges to provide extra rigidity. End flanges are jig-welded to ensure proper alignment with other trough sections. Angle flange troughs are suitable for light and medium-duty applications.

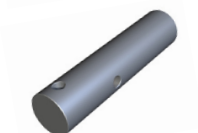


**Formed Flange U-Troughs** are manufactured with formed top flanges. End flanges are jig-welded to ensure proper alignment with other trough sections. Formed flange troughs are cost-effective, dust-tight and suitable for heavy-duty applications.

### SHAFTS



**Coupling Shafts** are precision cut and drilled to provide an exact fit with helicoid and sectional screws. A space is provided between the screw sections for a hanger and hanger bearing to support additional screw sections.



**End Shafts** are precision cut and drilled to provide an exact fit with helicoid and sectional screws. End shafts are designed to accommodate a variety of shaft seal and flange bearing arrangements.

Helicoid Flighting Stock Part Numbers

4HF206R	9HF414R	12HF614R
6HF304R	10HF306R	14HF508R
6HF308R	10HF412R	14HF614R
6HF312R	12HF408R	16HF610R
9HF306R	12HF412R	16HF614R
9HF312R	12HF508R	
9HF406R	12HF512R	

Sectional Flighting Stock Part Numbers

6SF316R	12SF424R	16SF624R
9SF316R	12SF524R	18SF624R
9SF324R	12SF624R	20SF624R
9SF424R	14SF516R	20SF724R
12SF416R	14SF624R	24SF724R

Helicoid Screw Stock Part Numbers

4H206R	9H414R	12H614R
6H304R	10H306R	14H508R
6H308R	10H412R	14H614R
6H312R	12H408R	16H610R
9H306R	12H412R	16H614R
9H312R	12H508R	
9H406R	12H512R	

Sectional Screw Stock Part Numbers

6S316R	12S424R	16S624R
9S316R	12S524R	18S624R
9S324R	12S624R	20S624R
9S424R	14S516R	20S724R
12S416R	14S624R	24S724R

Angle Flanged U-Trough Part Numbers

TUA414	TUA1412
TUA614	TUA1612
TUA914	TUA1810
TUA910	TUA20316
TUA1212	TUA24316

Form Flanged U-Trough Part Numbers

TUF6316	TUF14316
TUF9316	TUF16316
TUF12316	

Coupling Shaft Part Numbers

CS1	CS2716
CS112	CS3
CS2	CS3716

End Shaft Part Numbers

ES1	ES2716
ES112	ES3
ES2	ES3716



## HANGERS

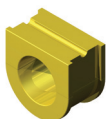


**Style 216 Hangers** are precision formed from heavy bar stock and U-shaped to offer superior rigidity for extra heavy-duty applications. Style 216 hanger bearings are required for use with 216 hangers.



**Style 226 Hangers** are precision formed from heavy bar stock and are the most common style of hanger. Bulk material flow is maximized by single leg design. Style 226 hangers are excellent for normal and heavy-duty applications.

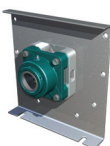
## HANGER BEARINGS



**Style 216 Hanger Bearings** provide intermediate support when multiple screw sections are used in a screw conveyor. Many different hanger bearing materials are available.



**Style 226 Hanger Bearings** provide intermediate support when multiple screw sections are used in a screw conveyor. Many different hanger bearing materials are available.



## TROUGH ENDS

**Trough Ends** are manufactured from heavy steel plate. All assembly and mounting holes are precision cut to ensure correct alignment with trough flanges.



## SEALS

**Plate Seals** are manufactured from steel plate and machined to very close tolerances. Utilizing a neoprene lip seal, plate seals are a very economical and effective shaft seal for light and medium-duty applications.



**Waste Pack Seals** are cast from steel and machined to very close tolerances. All KWS waste pack seals come standard with a lip seal for extra shaft sealing. Waste pack seals are the most common seal for light to medium-duty applications.



**Split Gland Seals** are cast from steel and machined to very close tolerances. Split gland seals are adjustable with seal packing that is inexpensive and easily replaced.



**Flanged Gland Seals** are manufactured and machined to very close tolerances. Three rings of seal packing provide maximum shaft sealing. This seal is designed for pressure or vacuum service.

Style 216 Hanger Part Numbers

HGR6216112	HGR122162716	HGR182163716
HGR9216112	HGR122163	HGR202163
HGR92162	HGR142162716	HGR202163716
HGR10216112	HGR142163	HGR242163716
HGR102162	HGR162163	
HGR122162	HGR182163	

Style 226 Hanger Part Numbers

HGR42261	HGR122262	HGR182263
HGR6226112	HGR122262716	HGR182263716
HGR9226112	HGR122263	HGR202263
HGR92262	HGR142262716	HGR202263716
HGR10226112	HGR142263	HGR242263716
HGR102262	HGR162263	

Hanger Bearing (Style 216) Part Numbers

HGB216112*	HGB2162716*	HGB2163716*
HGB2162*	HGB2163*	

Hanger Bearing (Style 226) Part Numbers

HGB226112*	HGB2262716*	HGB2263716*
HGB2262*	HGB2263*	

\* Material

Nylatron (NR)	Hard Iron (H)	Plastech (P)
UHMW (UHMW)	Hard Iron Drilled For Grease Pipe (GP)	Bronze (BR)
Gatke (G)		Wood (W)

Trough End With Foot Part Numbers

TEFO41UBB	TEFO122716UBBRB	TEFO183UBBRB
TEFO6112UBBRB	TEFO123UBBRB	TEFO183716UBBRB
TEFO9112UBBRB	TEFO142716UBBRB	TEFO203UBBRB
TEFO92UBB	TEFO143UBBRB	TEFO203716UBBRB
TEFO122UBB	TEFO163UBBRB	TEFO243716UBBRB

Plate Seal Part Numbers

PS112L	PS3L
PS2L	PS3716L
PS2716L	

Waste Pack Seal Part Numbers

WPS112WL	WPS3WL
WPS2WL	WPS3716WL
WPS2716WL	

Split Gland Seal Part Numbers

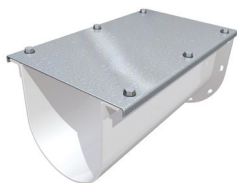
SGS112G	SGS3G
SGS2G	SGS3716G
SGS2716G	

Flanged Gland Seal Part Numbers

FGS112G	FGS3G
FGS2G	FGS3716G
FGS2716G	



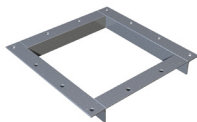
## TROUGH COVERS



**Trough Covers** are sheared and formed from gauge steel to fit over angle and formed flange troughs. Trough covers provide personnel protection and contain bulk materials being conveyed. Bolts or screw clamps are typically used to fasten covers to troughs.

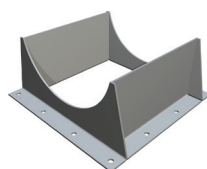
Flanged U-Trough Cover Part Numbers	
COV414UFL	COV1614UFL
COV614UFL	COV1810UFL
COV914UFL	COV2010UFL
COV1214UFL	COV2410UFL
COV1414UFL	

## SPOUTS



**Inlet Spouts** are precision cut and jig welded to provide an exact fit to trough covers. Inlet spouts allow the entrance of bulk materials into a screw conveyor.

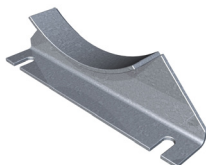
Inlet Spout Part Numbers	
ISF4	ISF16
ISF6	ISF18
ISF9	ISF20
ISF12	ISF24
ISF14	



**Discharge Spouts** are precision cut and jig welded to provide an exact fit to both angle and formed flange troughs. Discharge spouts allow the exit of bulk materials from a screw conveyor.

Discharge Spout Part Numbers	
DSP412	DSP16316
DSP612	DSP18316
DSP910	DSP20316
DSP1210	DSP24316
DSP1410	

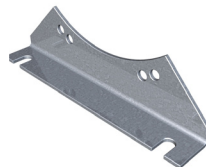
## TROUGH SADDLES



**Trough Saddles** are manufactured from steel plate and provide additional support at any location along the length of a screw conveyor.

Trough Saddle Part Numbers	
SAD4	SAD14
SAD6	SAD16
SAD9	SAD18
SAD10	SAD20
SAD12	SAD24

## TROUGH FEET



**Trough Feet** are manufactured from steel plate and provide additional support at any location where two trough sections are bolted together.

Trough Feet Part Numbers	
FT4	FT14
FT6	FT16
FT9	FT18
FT10	FT20
FT12	FT24

## COUPLING BOLTS



**Coupling Bolts** are stocked standard in high-strength Grade 5 construction and used to couple screw sections together with drive, coupling and end shafts. Coupling bolt diameter and length is unique to screw size.

Coupling Bolt Part Numbers (Grade 5 Standard)	
CB1114	CB3312
CB1122	CB34
CB2212	CB37164
CB27163	

## SCREW CLAMPS



**Screw Clamps** are manufactured from zinc-plated steel and are a simple, inexpensive method for fastening trough covers to troughs.

Screw Clamp Part Number
SCC1ZP



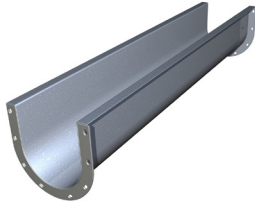
## STOCK COMPONENTS FOR THE RENDERING INDUSTRY



### SCREWS

**Rendering Screws** have 3/8-inch thick sectional flights continuously welded on both sides to schedule 80 pipe. 3-bolt drilling is included on both ends.

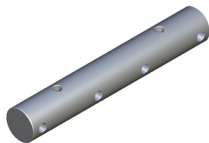
Rendering Screw Part Numbers	
9S424R80CW23B	14S624R80CW23B
12S624R80CW23B	16S624R80CW23B



### TROUGHS

**Rendering U-Troughs** are 3/16-inch thick formed flange troughs with 1/4-inch thick AR-235 wear liners. The wear liners are stitch welded to the troughs for easy removal and replacement.

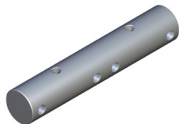
Rendering U-Trough Part Numbers	
TUF9316ARWL	TUF14316ARWL
TUF12316ARWL	TUF16316ARWL



### SHAFTS

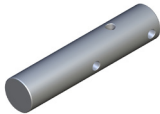
**3-Bolt Coupling Shafts** are precision cut and drilled to provide an exact fit with Rendering screws. A space is provided between the screw sections for a hanger and hanger bearing to support additional screw sections.

Rendering Coupling Shaft Part Numbers	
CS23B	CS33B
CS27163B	CS37163B



**3-Bolt Close Coupling Shafts** are precision cut and drilled to provide an exact fit with Rendering screws. Screw sections can be butted together to form a continuous helix.

Rendering Close Coupling Shaft Part Numbers	
CCS23B	CCS33B
CCS27163B	CCS37163B



**3-Bolt End Shafts** are precision cut and drilled to provide an exact fit with Rendering screws. End shafts are designed to accommodate a variety of shaft seal and flange bearing arrangements.

Rendering End Shaft Part Numbers	
ES23B	ES33B
ES27163B	ES37163B

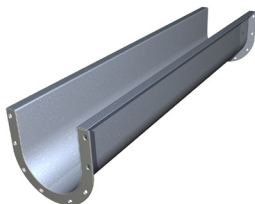
## 304 STAINLESS STEEL STOCK COMPONENTS



### SCREWS

**304 SS Helicoid Screws** are manufactured by mounting helicoid flighting on a center pipe and fastening by intermittent welds. Internal collars are inserted in each end and plug welded to accommodate shafts. Screws are structurally reinforced at the ends by end lugs.

304 SS Screw Part Numbers	
6HS304R	9HS406R
9HS306R	12HS408R



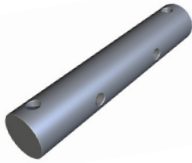
### TROUGHS

**304 SS Formed Flange U-Troughs** are manufactured with formed top flanges. End flanges are jig-welded to ensure proper alignment with other trough sections. Formed flange troughs are very cost-effective and dust-tight.

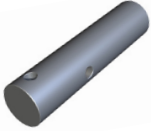
304 SS Formed Flange U-Trough Part Numbers	
TUF614SS	TUF1212SS
TUF914SS	



## SHAFTS



**304 SS Coupling Shafts** are precision cut and drilled to provide an exact fit with helicoid and sectional screws. A space is provided between the screw sections for a hanger and hanger bearing to support additional screw sections.

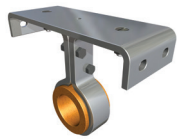


**304 SS End Shafts** are precision cut and drilled to provide an exact fit with helicoid and sectional screws. End shafts are designed to accommodate a variety of shaft seal and flange bearing arrangements.

304 SS Coupling Shaft Part Numbers	
CS112SS	CS3SS
CS2SS	CS3716SS
CS2716SS	

304 SS End Shaft Part Numbers	
ES112BBSS	ES3BBSS
ES2BBSS	ES3716BBSS
ES2716BBSS	

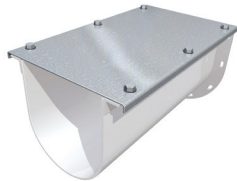
## HANGERS



**304 SS Style 226 Hangers** are precision formed from heavy bar stock and are the most common style of hanger. Bulk material flow is maximized by single leg design. Style 226 hangers are excellent for normal and heavy-duty applications.

304 SS Style 226 Hanger Part Numbers		
HGR6226112LSS	HGR122263LSS	HGR182263716LSS
HGR9226112LSS	HGR142262716LSS	HGR202263LSS
HGR92262LSS	HGR142263LSS	HGR202263716LSS
HGR122262LSS	HGR162263LSS	HGR242263716LSS
HGR122262716LSS	HGR182263LSS	

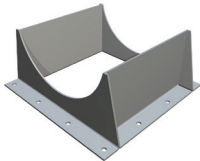
## TROUGH COVERS



**304 SS Trough Covers** are sheared and formed from gauge steel to fit over angle and formed flange troughs. Trough covers provide personnel protection and contain bulk materials being conveyed. Bolts or screw clamps are typically used to fasten covers to troughs.

304 SS Flanged U-Trough Covers Part Numbers	
COV614UFLSS	COV1214UFLSS
COV914UFLSS	

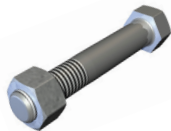
## SPOUTS



**304 SS Discharge Spouts** are precision cut and jig welded to provide an exact fit to both angle and formed flange troughs. Discharge spouts allow the exit of bulk materials from a screw conveyor.

304 SS Discharge Spout Part Numbers	
DSP614PSS	DSP1212PSS
DSP914PSS	

## COUPLING BOLTS



**304 SS Coupling Bolts** are used to couple screw sections together with drive, coupling and end shafts. Coupling bolt diameter and length is unique to screw size.

304 SS Coupling Bolts Part Numbers	
CB1114188SS	CB3312188SS
CB1122188SS	CB34188SS
CB2212188SS	CB37164188SS
CB27163188SS	

## SCREW CLAMPS



**304 SS Screw Clamps** are a simple, inexpensive method for fastening trough covers to troughs.

304 SS Screw Clamp Part Number
SCC1SS





**Design  
Engineering  
Manufacturing**



**ISO 9001  
Certified**



**MADE IN THE USA**

3041 Conveyor Drive | Burleson, TX 76028  
Toll-free: (800) 543-6558 | Local Phone: (817) 295-2240 | Fax: (817) 447-8528  
Inquiries: [sales@kwsmfg.com](mailto:sales@kwsmfg.com) | [www.kwsmfg.com](http://www.kwsmfg.com)