

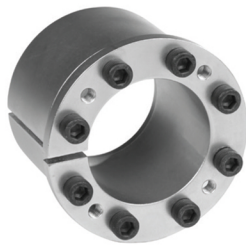
Climax KLD Interchange Guide

Dimensions and/or capacities are subject to change without notice. Please consult all manufacturers' published specification before substituting; failure to do so could result in permanent damage to machinery components and/or operational failures. Climax does not guarantee exact dimensional or performance equivalence with any other manufacturer.

	Climax KLD Series	Ringfeder® Ecoloc® Series	Fenner® B-LOC® Series	Tollok® Series	US Tsubaki Powerlock® Series
Internal Locking Assemblies	C192/C801	Not Available	Trantorque GT	Not Available	Not Available
	C193	Not Available	B109	TLK 138	PL KE (inch sizes only)
	C123	7003 RfN 7013.0	B103	TLK 130 TLK 132 TLK 139	PL FL
	C133	7006 RfN 7013.1	B106	TLK 131 TLK 133 TLK 134	PL AE
	C200	RfN 7012	B400	TLK 200	PL AS
	C170	7110	B800	TLK 110	PL TF
	C405	7005	B112	TLK 450	PL AD
	C415	7009	B115	TLK 451	Not Available
	C425	Not Available	B113	Not Available	Not Available
External Shrink Discs	C733 Standard Duty	RfN 4071 RfN 4061	SD-10	TLK 603	PL SL
	C732 Standard Duty	RfN 4091	SD-30	TLK 602	Not Available
Keyless Rigid Couplings	C600	Not Available	WK	TLK 500	Not Available

Climax can also provide both functional and exact KLD interchanges for the following: TAS Schäfer, KTR Clampex®, SIT-LOCK®, Compomac CONEX, Stüwe, Ringspann®, Bikon-Technik®, and Lovejoy® SLD.

Climax Metal Products Company now offers C192-Series Keyless Locking Assemblies and C801-Series Single Nut Assemblies. These locking assemblies create a mechanical interference fit between components.



Both products provide the following advantages:

- Quick and simple installation
- Zero backlash
- No need for keyways or cumbersome fits
- Zinc plated for corrosion resistance

C192-Series provides:

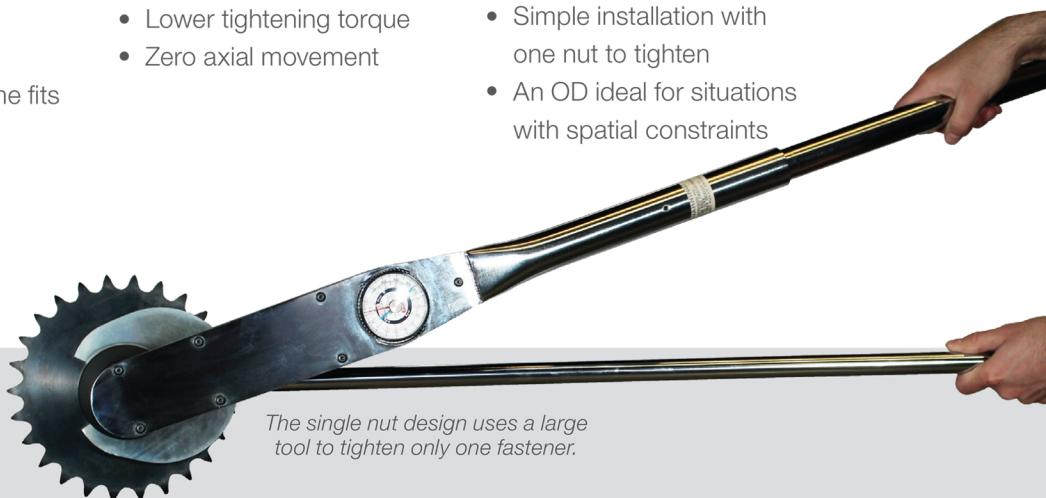
- Lower tightening torque
- Zero axial movement

C801-Series provides:

- Simple installation with one nut to tighten
- An OD ideal for situations with spatial constraints



A small handheld torque wrench is all that is required to install the C192.



The single nut design uses a large tool to tighten only one fastener.

Inches

Bore Size (in)	Climax Series C192 Part No.	Climax Series C801 Part No.	Fenner Part No.
5/8	C192E-062	C801E-062	6202120
11/16	C192E-068	C801E-068	6202140
3/4	C192E-075	C801E-075	6202160
13/16	C192E-081	C801E-081	6202190
7/8	C192E-087	C801E-087	6202200
15/16	C192E-093	C801E-093	6202220
1	C192E-100	C801E-100	6202240
1 1/16	C192E-106	C801E-106	6202270
1 1/8	C192E-112	C801E-112	6202280
1 3/16	C192E-118	C801E-118	6202300
1 1/4	C192E-125	C801E-125	6202320
1 5/16	C192E-131	C801E-131	6202350
1 3/8	C192E-137	C801E-137	6202360
1 7/16	C192E-143	C801E-143	6202380
1 1/2	C192E-150	C801E-150	6202400
1 9/16	C192E-156	C801E-156	6202430
1 5/8	C192E-162	C801E-162	6202440
1 11/16	C192E-168	C801E-168	6202460
1 3/4	C192E-175	C801E-175	6202480
1 13/16	C192E-181	C801E-181	6202510
1 7/8	C192E-187	C801E-187	6202520
1 15/16	C192E-193	C801E-193	6202540
2	C192E-200	C801E-200	6202560
2 1/16		C801E-206	6202562
2 1/8		C801E-212	6202564
2 3/16		C801E-218	6202566
2 1/4		C801E-225	6202568
2 5/16		C801E-231	6202570
2 3/8		C801E-237	6202572
2 7/16		C801E-243	6202574
2 1/2		C801E-250	6202576
2 9/16		C801E-256	6202580
2 5/8		C801E-262	6202582
2 11/16		C801E-268	6202584
2 3/4		C801E-275	6202586
2 13/16		C801E-281	6202590
2 7/8		C801E-287	6202592
2 15/16		C801E-293	6202594
3		C801E-300	6202596

Metric

Bore Size (mm)	Climax Series C192 Part No.	Climax Series C801 Part No.	Fenner Part No.
15	C192M-15X38	C801M-015	6202800
16	C192M-16X38	C801M-016	6202803
17	C192M-17X38	C801M-017	6202804
18	C192M-18X38	C801M-018	6202805
19	C192M-19X38	C801M-019	6202808
20	C192M-20X45	C801M-020	6202811
22	C192M-22X45	C801M-022	6202815
24	C192M-24X45	C801M-024	6202820
25	C192M-25X45	C801M-025	6202825
28	C192M-28X51	C801M-028	6202830
30	C192M-30X51	C801M-030	6202835
32	C192M-32X51	C801M-032	6202840
34	C192M-34X60.5	C801M-034	6202845
35	C192M-35X60.5	C801M-035	6202850
36	C192M-36X60.5	C801M-036	6202855
38	C192M-38X60.5	C801M-038	6202860
40	C192M-40X67	C801M-040	6202865
42	C192M-42X67	C801M-042	6202870
45	C192M-45X73	C801M-045	6202876
48	C192M-48X73	C801M-048	6202880
50	C192M-50X73	C801M-050	6202885
55		C801M-055	6202900
60		C801M-060	6202910
65		C801M-065	6202920
70		C801M-070	6202930
75		C801M-075	6202940



IBT Industrial Solutions
 9320 West 55th Street
 Merriam, KS 66203
 Ph: (913) 362-5102
www.ibtinc.com