



POWER TRANSMISSION



BALDOR • DODGE



V-BELTS, VARIABLE SPEED, PULLEYS, SHEAVES AND BUSHINGS

Amec, Baldor Dodge, Bando, Bearings Limited, Brewer, Contitech, Fenner Drives, Jason, Lovejoy, Master Drives, Martin, Maurey, PT International, Regal PTS Browning, Regal PTS Morse, Timken Carlisle

- ▲ 4L, 5L, A, B, C, 3V, 5V, 8V
- ▲ Gear
- ▲ Positive Belt Drives
- ▲ Stock Bore
- ▲ Variable Speed
- ▲ Chain
- ▲ Hydrostatic
- ▲ Power Twist
- ▲ Taper Lock
- ▲ XT
- ▲ Disc
- ▲ Idlers
- ▲ Q D
- ▲ Tensioners



ENCLOSED GEAR REDUCERS

Baldor Dodge, Bison, Bonfiglioli, Foote Jones, Grove, Hub City, Leeson, Master PT, Motovario, Nord, Peerless-Winsmith, Rossi, Regal PTS Browning, Regal PTS Morse, Rexnord/Falk, SEW Eurodrive, Shimpo, Siemens Flender, Sterling, Stober, Thomson Micron

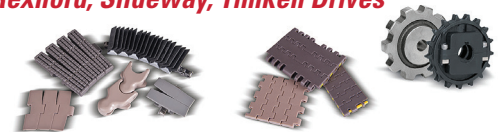
- ▲ Bevel
- ▲ Hydraulic
- ▲ Miter
- ▲ Right Angle
- ▲ Worm
- ▲ Helical
- ▲ Hypoid
- ▲ Offset
- ▲ Shaft Mount
- ▲ Stainless Steel
- ▲ High Efficiency
- ▲ In-Line
- ▲ Parallel



TABLE TOP, ROLLER CHAIN AND CHAIN ATTACHMENTS

Allied Locke, Amec, Baldor Dodge, Bearings Limited, Brewer, Daido, Diamond, Habasit, HKK, Hitachi, IWIS, Peer, PT International, Regal PTS Morse, Regal PTS System Plast, Renold Jeffery, Rexnord, Slideway, Timken Drives

- ▲ Attachments
- ▲ Idlers
- ▲ No Lube
- ▲ Multi-strand
- ▲ Extended Pitch
- ▲ O'Ring
- ▲ Stainless
- ▲ Standard
- ▲ Heavy
- ▲ Plated



CONVEYOR AND ENGINEERING CLASS CHAIN

Allied Locke, Diamond, Daido, Hitachi, Martin, Peer, Promac, Renold Jeffery, Rexnord, Timken Drives, Webster

- ▲ Agricultural,
- ▲ Combination
- ▲ Drop Forged
- ▲ Non-Metallic
- ▲ Table Top Chain
- ▲ Attachments
- ▲ Detachable
- ▲ Extended Pitch
- ▲ Pintle
- ▲ Welded Steel
- ▲ Cast
- ▲ Drag
- ▲ Mill
- ▲ Steel Brushed



SPROCKETS

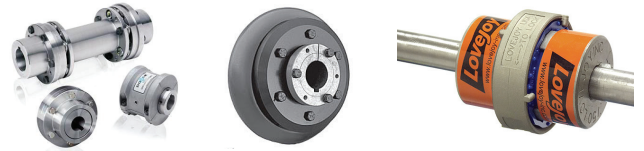
Allied Locke, AMEC, Baldor Dodge, Bearings Limited, Brewer, Brewton, Daido, Hitachi, Renold Jeffery, Linn, Martin, Peer, Pobco, Promac, PT International, Regal PTS Browning, Regal PTS System Plast, Renold Jeffery, Rexnord, Slideway, Webster

- ▲ Cast and Engineering Chain
- ▲ Extended Pitch
- ▲ Finished Bore
- ▲ Idlers
- ▲ Plastic
- ▲ Q. D.
- ▲ Steel
- ▲ Stainless Steel
- ▲ Stock Bore
- ▲ Taper Lock


SHAFT COUPLING AND COLLARS

Amec, Baldor Dodge, Bearings Limited, Climax, Diamond, Drives, GL Huyett, Lovejoy, Martin, PT International, Regal PTS Kopflex & Morse, Renold Jeffery, Rexnord, Siemens Flender, System Components, Timken, Zero-Max

- ▲ Chain
- ▲ Elastometer Element
- ▲ Disc
- ▲ Fluid
- ▲ Gear
- ▲ Grid
- ▲ Jaw
- ▲ Keyless
- ▲ Rigid
- ▲ S-Flex
- ▲ Shaft Collars,
- ▲ Spacer
- ▲ Universal Joints


OPEN GEARS

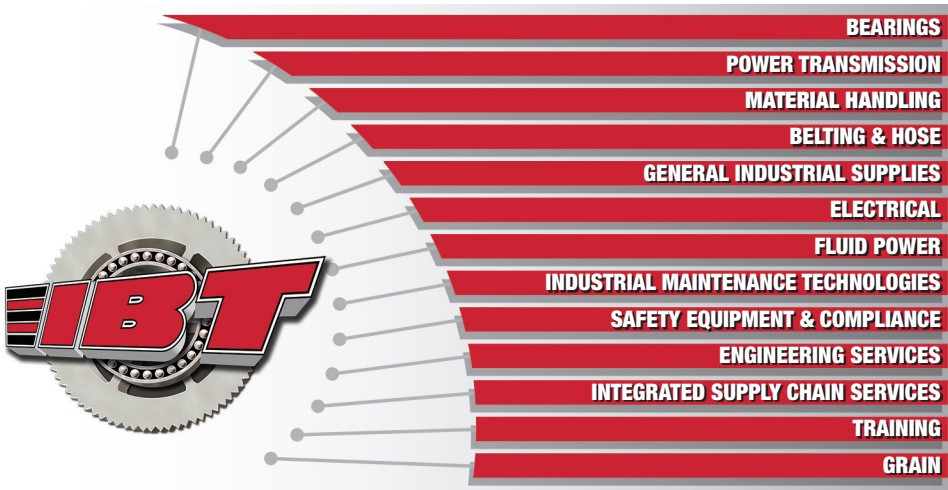
AMEC, Baldor Dodge, Bearings Limited, Linn, Martin, PT International, Regal PTS Browning, Regal PTS Morse, Rush

- ▲ Bevel
- ▲ Change
- ▲ Gear Rack
- ▲ Helical
- ▲ Hypoid
- ▲ Miter
- ▲ Spiral
- ▲ Spur
- ▲ Standard and Specials
- ▲ Worm


PREDICTIVE MAINTENANCE TOOLS

Electro Sensor, FAG, INA, JAX, Koyo, NTN, SKF, SPX, Schaeffler, Timken, Vibralign

- ▲ Acoustic
- ▲ Laser and Shaft Alignment
- ▲ Oil Analysis
- ▲ Speed
- ▲ Strobe
- ▲ Temperature
- ▲ Thermal Imaging
- ▲ Ultrasound,
- ▲ Vibration


What Can We Do For You Today?


IBT, Inc. is a leading full service industrial supplier. Since 1949, IBT has been helping customers maintain efficient, productive, and safe workplace facilities through quality industrial MRO supplies, products, and services. Top-notch industrial expertise and superior customer service set IBT apart. IBT has nearly 50 stocking locations throughout the United States, and is headquartered in the Kansas City suburb of Merriam, Kansas.

For an IBT location near you
 call 1-800-332-2114 or visit www.ibtinc.com

Copyright © 2017 IBT, Inc. All rights reserved.