

CLEAT LINE



**AGGRESSIVE TRANSFER
AND ELEVATION OF MATERIALS**

Free flowing materials handling

The CleatLine® molded cleats ensure years of trouble free service.



CleatLine®

No more trouble with **free flowing materials** transport

Made for aggressive transfer and elevation of free flowing materials, our CleatLine® gives you efficient, smooth operation over return idlers and quick pick-up at loading points. Cleat patterns are molded into the belt – no separation problems or vulcanising of cleats to the belt.

Markets and Applications



Grain



Wood chips



Bark



Cement



Light aggregates



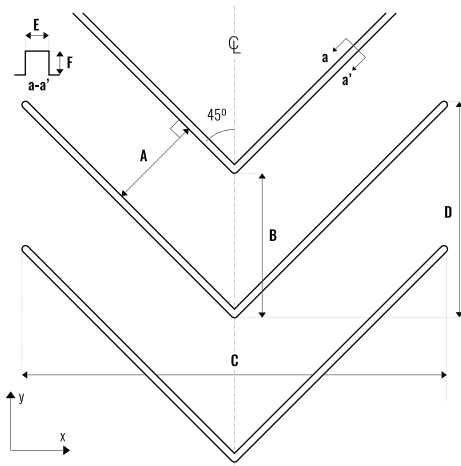
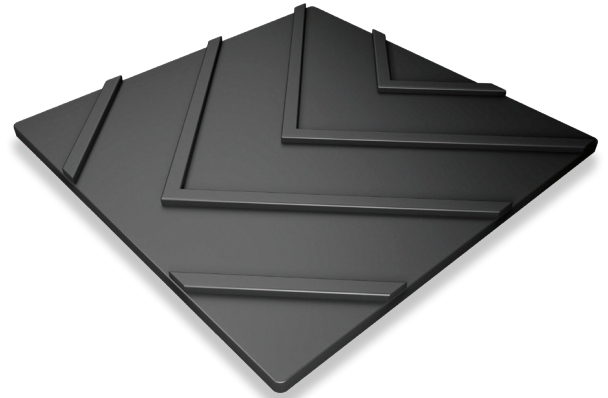
Materials handled on road machines

CHEVRON 24 & 42

Carcasses

PSR™, UsFlex™, NovaCore™ and RockMaster™

Please contact your representative to get detailed information about cover compounds availability.



Dimensions

Reference	Chevron 24	Chevron 42
A	6"	8"
B	9"	12"
C	24"	42"
D	12"	21"
E	3/8"	1/2"
F	3/8"	1/2"
G	Any in spec	Any in spec
Min belt width	36"	48"
Max belt width	48"	72"
Available widths	Any in spec	Any in spec
Slit widths	None	None

Gauge Requirements

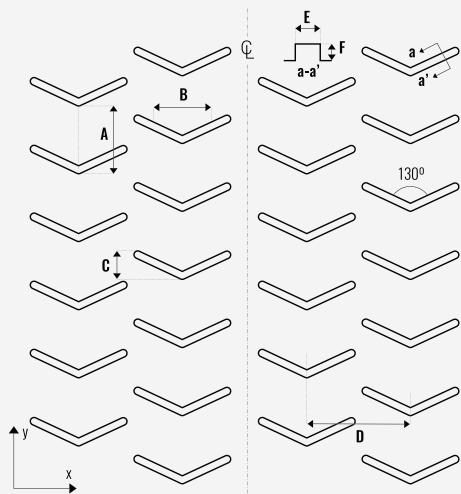
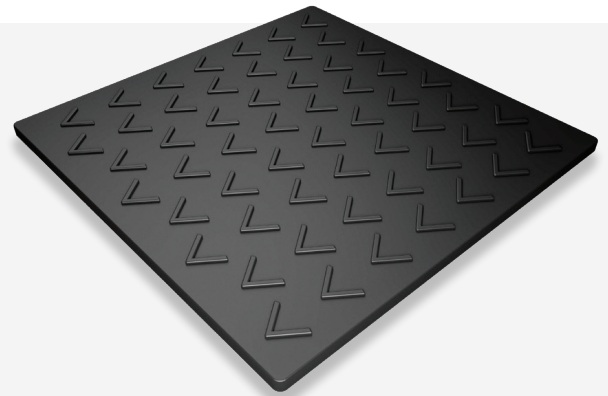
Min top cover	3/16"
Max top cover	As requested
Min bottom cover	0.00" (Bareback)
Max bottom cover	As requested
Between Ply Skim	Carcass dependent
Top Skim	Carcass dependent
Bottom Skim	Carcass dependent

V-TOP

Carcasses

PSR™, UsFlex™, NovaCore™ and RockMaster™

Please contact your representative to get detailed information about cover compounds availability.



Dimensions

Reference	V-Top
A	4"
B	5 1/2"
C	19/16"
D	6"
E	3/8"
F	1/4"
G	Any in spec
Min belt width	36"
Max belt width	72"
Available widths	Any in spec
Slit widths	Any in spec

Gauge Requirements

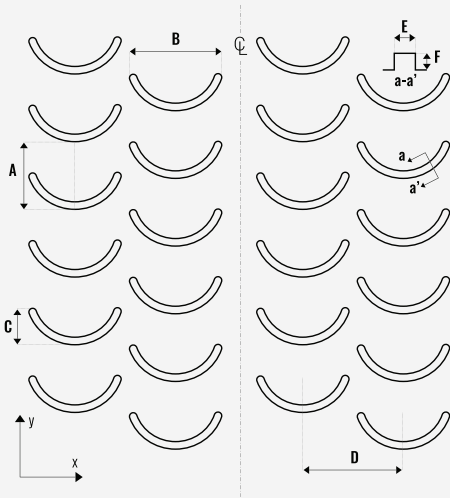
Min top cover	1/8"
Max top cover	As requested
Min bottom cover	0.00" (Bareback)
Max bottom cover	As requested
Between Ply Skim	Carcass dependent
Top Skim	Carcass dependent
Bottom Skim	Carcass dependent

C-TOP

Carcasses

PSR™, UsFlex™, NovaCore™ and RockMaster™

Please contact your representative to get detailed information about cover compounds availability.



Dimensions

Reference	C-Top
A	4 3/8"
B	5 1/2"
C	2 3/16"
D	6"
E	5/16"
F	1/4"
G	Any in spec
Min belt width	36"
Max belt width	72"
Available widths	Any in spec
Slit widths	Any in spec

Gauge Requirements

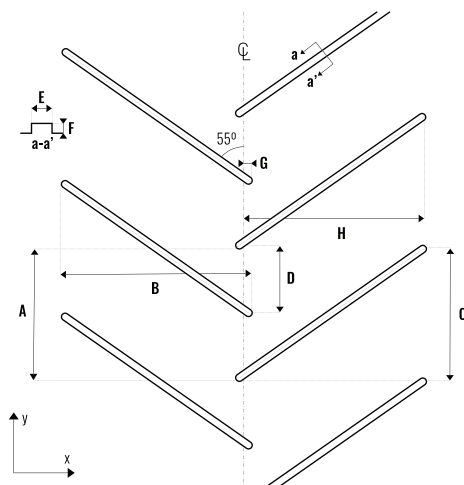
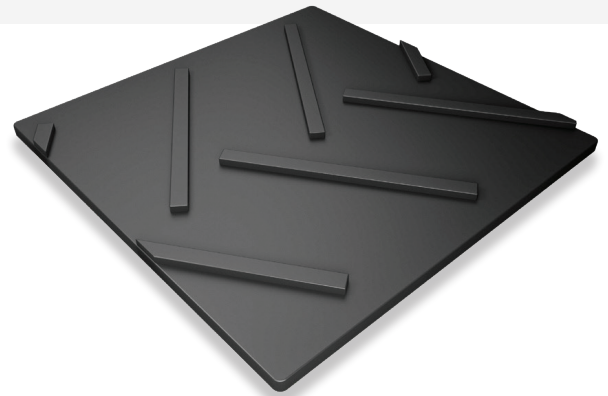
Min top cover	1/8"
Max top cover	As requested
Min bottom cover	0.00" (Bareback)
Max bottom cover	As requested
Between Ply Skim	Carcass dependent
Top Skim	Carcass dependent
Bottom Skim	Carcass dependent

F-18 & F-36

Carcasses

PSR™, UsFlex™, NovaCore™ and RockMaster™

Please contact your representative to get detailed information about cover compounds availability.



Dimensions

Reference	F-18	F-36
A	8"	8"
B	18"	36"
C	7"	13 1/5"
D	4"	4"
E	3/8"	3/8"
F	3/16"	3/16"
G	5/16"	5/16"
Min belt width	36"	42"
Max belt width	72"	72"
Available widths	Any in spec	Any in spec
Slit widths	Any in spec	Any in spec

Gauge Requirements

Min top cover	1/8"
Max top cover	As requested
Min bottom cover	0.00" (Bareback)
Max bottom cover	As requested
Between Ply Skim	Carcass dependent
Top Skim	Carcass dependent
Bottom Skim	Carcass dependent

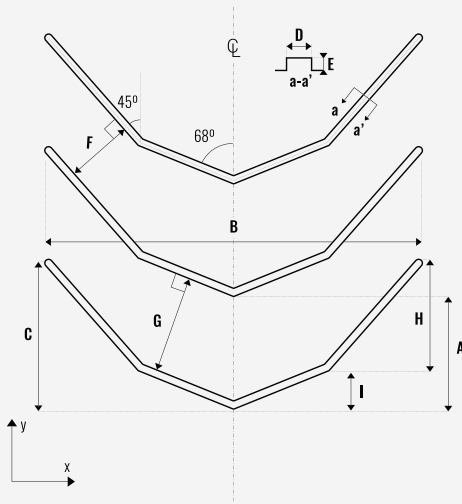
B-TOP



Carcasses

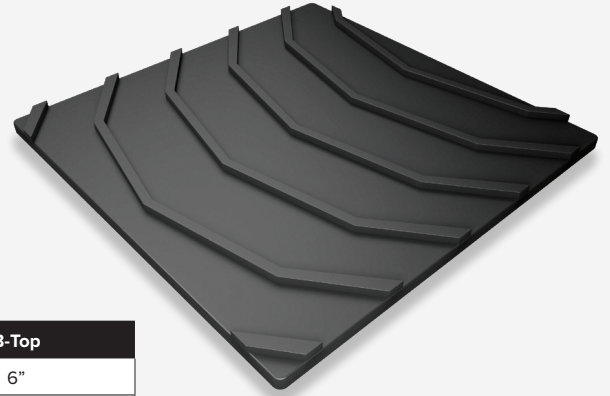
PSR™, UsFlex™, NovaCore™ and RockMaster™

Please contact your representative to get detailed information about cover compounds availability.



Dimensions

Reference	B-Top
A	6"
B	22"
C	8 1/2"
D	1/2"
E	1/4"
F	4 1/4"
G	5 1/2"
H	6 1/4"
I	2 1/4"
J	Any in spec
Min belt width	36"
Max belt width	72"
Available widths	Any in spec
Slit widths	Any in spec



Gauge Requirements

Min top cover	1/8"
Max top cover	As requested
Min bottom cover	0.00" (Bareback)
Max bottom cover	As requested
Between Ply Skim	Carcass dependent
Top Skim	Carcass dependent
Bottom Skim	Carcass dependent

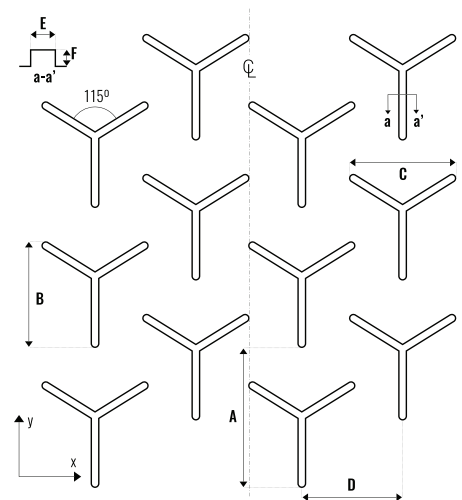
Y-TOP



Carcasses

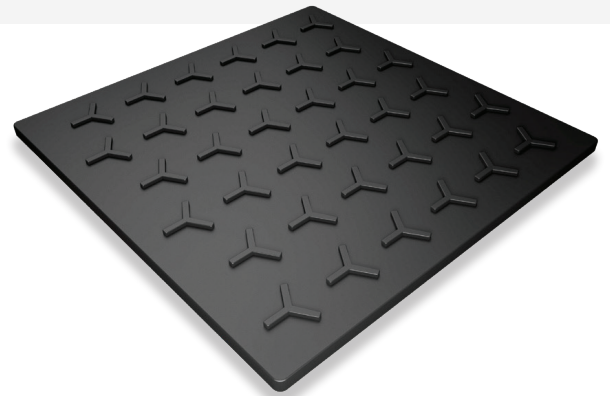
PSR™, UsFlex™, NovaCore™ and RockMaster™

Please contact your representative to get detailed information about cover compounds availability.



Dimensions

Reference	Y-Top
A	8"
B	6"
C	6"
D	6"
E	3/8"
F	1/4"
G	Any in spec
Min belt width	36"
Max belt width	72"
Available widths	Any in spec
Slit widths	Any in spec



Gauge Requirements

Min top cover	1/8"
Max top cover	As requested
Min bottom cover	0.00" (Bareback)
Max bottom cover	As requested
Between Ply Skim	Carcass dependent
Top Skim	Carcass dependent
Bottom Skim	Carcass dependent

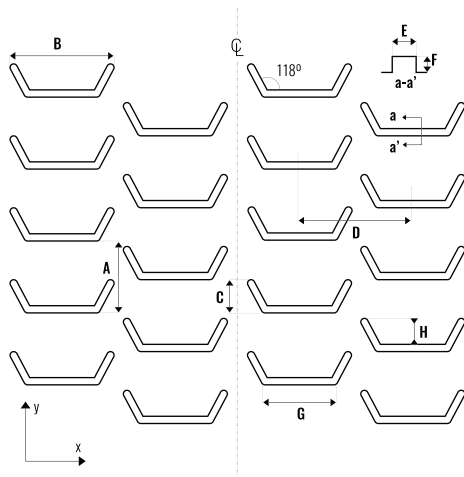
BUCKET TOP



Carcasses

PSR™, UsFlex™, NovaCore™ and RockMaster™

Please contact your representative to get detailed information about cover compounds availability.



Dimensions

Reference	Bucket Top
A	3 3/4"
B	6"
C	1 7/8"
D	6"
E	3/8"
F	1/4"
G	4 1/4"
H	2"
I	Any in spec
Min belt width	36"
Max belt width	72"
Available widths	Any in spec
Slit widths	Any in spec



Gauge Requirements

Min top cover	1/8"
Max top cover	As requested
Min bottom cover	0.00" (Bareback)
Max bottom cover	As requested
Between Ply Skim	Carcass dependent
Top Skim	Carcass dependent
Bottom Skim	Carcass dependent

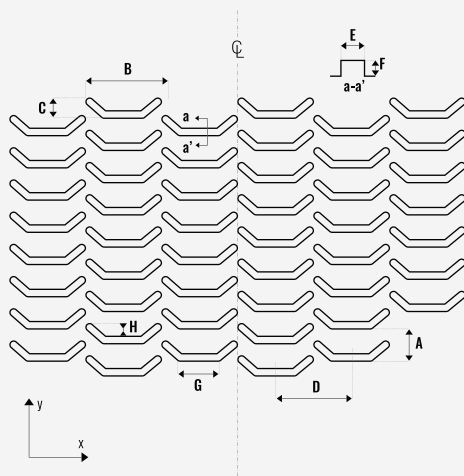
MINI-BUCKET



Carcasses

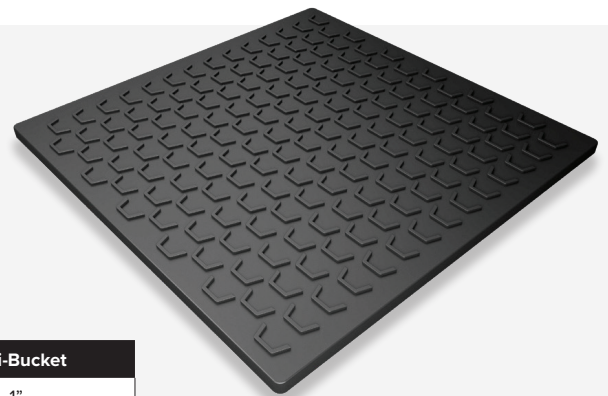
PSR™, UsFlex™, NovaCore™ and RockMaster™

Please contact your representative to get detailed information about cover compounds availability.



Dimensions

Reference	Mini-Bucket
A	1"
B	1 7/8"
C	5/8"
D	2"
E	5/32"
F	3/16"
G	1"
H	1/2"
I	Any in spec
Min belt width	36"
Max belt width	72"
Available widths	Any in spec
Slit widths	Any in spec



Gauge Requirements

Min top cover	5/64"
Max top cover	As requested
Min bottom cover	0.00" (Bareback)
Max bottom cover	As requested
Between Ply Skim	Carcass dependent
Top Skim	Carcass dependent
Bottom Skim	Carcass dependent

Tough Belts for Tough Applications

Fenner Dunlop strives to be the premier provider of the safest and most complete conveyor systems and services to the mining and industrial sectors, including belt manufacturing and system engineering. Through strategic acquisitions and investments, and a strong management and financial discipline, the company is well positioned to help customers grow over the long haul. Today, within our 150 years of proven belting manufacturing experience, Fenner Dunlop Americas brings more than 70 years of service solutions and 20 years of belt conveyor system engineering.



(800) 661-2358

Industrial and Mining Conveyor Belting Sales



Fenner Dunlop

Omega Corporate Center
1000 Omega Drive, Suite 1400
Pittsburgh, PA 15205

Phone: 412-249-0700
Fax: 412-249-0701



fennerdunlopamericas.com

FENNER  DUNLOP
CONVEYOR BELTING

