



# CORROSION RESISTANT SHAFT COLLARS



Climax 316 stainless steel shaft collars provide a locking solution that eliminates the likelihood of contamination from corrosion in environments where frequent wash-downs are common and downtime is costly.

Climax offers a solution to the corrosion environments persistent in many applications in the Food and Beverage Industry. Climax shaft collars manufactured from 316 stainless steel are extremely corrosion resistant making them ideal for applications in harsh environments. Since stainless steel is easy to sanitize, is inert to corrosion, and is proven durable, it is considered the industry standard for food processing, packaging, breweries, bottling, and canning applications.

Offered in CR1C-Series one-piece clamping collars, CR2C-Series two-piece clamping collars, and CRC-Series set screw collars, Climax has a full assortment of sizes ready to ship from stock. Contact us for more information on how 316 stainless steel shaft collars can help with corrosion contamination in the Food and Beverage Industry.

**IBT**

**INDUSTRIAL SOLUTIONS**™

9320 West 55th Street, Merriam, KS 66203

Ph: (913) 362-5102 [www.ibtinc.com](http://www.ibtinc.com)

**CLIMAX**  
METAL PRODUCTS COMPANY

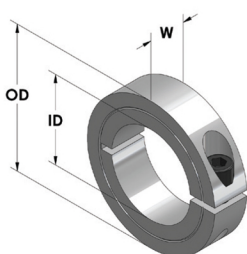
# CORROSION RESISTANT ONE-PIECE CLAMPING COLLARS - CR1C-SERIES



Design fully engages the shaft without marring

Greater axial holding power than set screw collars

Effective on hard and soft shafts



## DIMENSION

Bore, Inch

## TOLERANCE

+.003/- .000

PART NUMBER	PRODUCT SPECIFICATIONS				
	316 STAINLESS STEEL	BORE SIZE	OD	WIDTH	CLAMP SCREW
CR1C-012-S	1/8	11/16	5/16	4-40 x 3/8	0.44
CR1C-018-S	3/16	11/16	5/16	4-40 x 3/8	0.43
CR1C-025-S	1/4	11/16	5/16	4-40 x 3/8	0.40
CR1C-031-S	5/16	11/16	5/16	4-40 x 3/8	0.36
CR1C-037-S	3/8	7/8	3/8	6-32 x 3/8	0.70
CR1C-043-S	7/16	15/16	3/8	6-32 x 3/8	0.81
CR1C-050-S	1/2	1 1/8	13/32	8-32 x 1/2	1.30
CR1C-056-S	9/16	1 5/16	7/16	10-32 x 1/2	2.00
CR1C-062-S	5/8	1 5/16	7/16	10-32 x 1/2	1.80
CR1C-068-S	11/16	1 1/2	1/2	10-32 x 1/2	2.90
CR1C-075-S	3/4	1 1/2	1/2	1/4-28 x 5/8	2.70
CR1C-081-S	13/16	1 5/8	1/2	1/4-28 x 5/8	3.20
CR1C-087-S	7/8	1 5/8	1/2	1/4-28 x 5/8	2.96
CR1C-093-S	15/16	1 3/4	1/2	1/4-28 x 5/8	3.51
CR1C-100-S	1	1 3/4	1/2	1/4-28 x 5/8	3.30
CR1C-106-S	1 1/16	1 7/8	1/2	1/4-28 x 5/8	3.90
CR1C-112-S	1 1/8	1 7/8	1/2	1/4-28 x 3/4	3.63
CR1C-118-S	1 3/16	2 1/16	1/2	1/4-28 x 3/4	4.70
CR1C-125-S	1 1/4	2 1/16	1/2	1/4-28 x 3/4	4.40
CR1C-131-S	1 5/16	2 1/4	9/16	1/4-28 x 3/4	6.19
CR1C-137-S	1 3/8	2 1/4	9/16	1/4-28 x 3/4	5.90
CR1C-143-S	1 7/16	2 1/4	9/16	1/4-28 x 3/4	5.50
CR1C-150-S	1 1/2	2 3/8	9/16	1/4-28 x 3/4	6.30
CR1C-156-S	1 9/16	2 3/8	9/16	1/4-28 x 3/4	5.90
CR1C-162-S	1 5/8	2 5/8	11/16	5/16-24 x 1	9.65
CR1C-168-S	1 11/16	2 3/4	11/16	5/16-24 x 1	10.70
CR1C-175-S	1 3/4	2 3/4	11/16	5/16-24 x 1	10.20
CR1C-181-S	1 13/16	2 7/8	11/16	5/16-24 x 1	10.20
CR1C-187-S	1 7/8	2 7/8	11/16	5/16-24 x 1	10.90
CR1C-193-S	1 15/16	3	11/16	5/16-24 x 1	12.00
CR1C-200-S	2	3	11/16	5/16-24 x 1	11.60
CR1C-206-S	2 1/16	3 1/4	3/4	5/16-24 x 1	11.60
CR1C-212-S	2 1/8	3 1/4	3/4	5/16-24 x 1	15.20
CR1C-218-S	2 3/16	3 1/4	3/4	5/16-24 x 1	14.40
CR1C-225-S	2 1/4	3 1/4	3/4	5/16-24 x 1	13.66
CR1C-231-S	2 5/16	3 1/2	3/4	5/16-24 x 1	13.66
CR1C-237-S	2 3/8	3 1/2	3/4	5/16-24 x 1	16.50
CR1C-243-S	2 7/16	3 1/2	3/4	5/16-24 x 1	15.60
CR1C-250-S	2 1/2	3 3/4	7/8	3/8-24 x 1	23.10
CR1C-256-S	2 9/16	3 7/8	7/8	3/8-24 x 1	23.10
CR1C-262-S	2 5/8	3 7/8	7/8	3/8-24 x 1	23.90
CR1C-268-S	2 11/16	4	7/8	3/8-24 x 1	25.80
CR1C-275-S	2 3/4	4	7/8	3/8-24 x 1	29.20
CR1C-281-S	2 13/16	4 1/4	7/8	3/8-24 x 1	29.20
CR1C-287-S	2 7/8	4 1/4	7/8	3/8-24 x 1	29.20
CR1C-293-S	2 15/16	4 1/4	7/8	3/8-24 x 1	28.00
CR1C-300-S	3	4 1/4	7/8	3/8-24 x 1	26.80

# CORROSION RESISTANT TWO-PIECE CLAMPING COLLARS - CR2C-SERIES

PART NUMBER	PRODUCT SPECIFICATIONS				
316 STAINLESS STEEL	BORE SIZE	OD	WIDTH	CLAMP SCREW	APPROX. WEIGHT (OZ.)
CR2C-012-S	1/8	11/16	5/16	4-40 x 3/8	0.43
CR2C-018-S	3/16	11/16	5/16	4-40 x 3/8	0.39
CR2C-025-S	1/4	11/16	5/16	4-40 x 3/8	0.38
CR2C-031-S	5/16	11/16	5/16	4-40 x 3/8	0.34
CR2C-037-S	3/8	7/8	3/8	6-32 x 3/8	0.71
CR2C-043-S	7/16	15/16	3/8	6-32 x 3/8	0.76
CR2C-050-S	1/2	1 1/8	13/32	8-32 x 1/2	1.26
CR2C-056-S	9/16	1 5/16	7/16	10-32 x 1/2	2.00
CR2C-062-S	5/8	1 5/16	7/16	10-32 x 1/2	1.80
CR2C-068-S	11/16	1 1/2	1/2	10-32 x 1/2	2.80
CR2C-075-S	3/4	1 1/2	1/2	1/4-28 x 5/8	2.60
CR2C-081-S	13/16	1 5/8	1/2	1/4-28 x 5/8	3.10
CR2C-087-S	7/8	1 5/8	1/2	1/4-28 x 5/8	2.83
CR2C-093-S	15/16	1 3/4	1/2	1/4-28 x 5/8	3.40
CR2C-100-S	1	1 3/4	1/2	1/4-28 x 5/8	3.10
CR2C-106-S	1 1/16	1 7/8	1/2	1/4-28 x 5/8	3.67
CR2C-112-S	1 1/8	1 7/8	1/2	1/4-28 x 3/4	3.50
CR2C-118-S	1 3/16	2 1/16	1/2	1/4-28 x 3/4	4.50
CR2C-125-S	1 1/4	2 1/16	1/2	1/4-28 x 3/4	4.22
CR2C-131-S	1 5/16	2 1/4	9/16	1/4-28 x 3/4	5.90
CR2C-137-S	1 3/8	2 1/4	9/16	1/4-28 x 3/4	5.70
CR2C-143-S	1 7/16	2 1/4	9/16	1/4-28 x 3/4	5.23
CR2C-150-S	1 1/2	2 3/8	9/16	1/4-28 x 3/4	6.06
CR2C-156-S	1 9/16	2 3/8	9/16	1/4-28 x 3/4	5.61
CR2C-162-S	1 5/8	2 5/8	11/16	5/16-24 x 1	9.31
CR2C-168-S	1 11/16	2 3/4	11/16	5/16-24 x 1	9.86
CR2C-175-S	1 3/4	2 3/4	11/16	5/16-24 x 1	11.00
CR2C-181-S	1 13/16	2 7/8	11/16	5/16-24 x 1	10.90
CR2C-187-S	1 7/8	2 7/8	11/16	5/16-24 x 1	10.46
CR2C-193-S	1 15/16	3	11/16	5/16-24 x 1	11.57
CR2C-200-S	2	3	11/16	5/16-24 x 1	11.00
CR2C-206-S	2 1/16	3 1/4	3/4	5/16-24 x 1	11.00
CR2C-212-S	2 1/8	3 1/4	3/4	5/16-24 x 1	15.00
CR2C-218-S	2 3/16	3 1/4	3/4	5/16-24 x 1	14.00
CR2C-225-S	2 1/4	3 1/4	3/4	5/16-24 x 1	13.10
CR2C-231-S	2 5/16	3 1/2	3/4	5/16-24 x 1	15.90
CR2C-237-S	2 3/8	3 1/2	3/4	5/16-24 x 1	15.20
CR2C-243-S	2 7/16	3 1/2	3/4	5/16-24 x 1	15.30
CR2C-250-S	2 1/2	3 3/4	7/8	3/8-24 x 1	22.30
CR2C-256-S	2 9/16	3 7/8	7/8	3/8-24 x 1	24.00
CR2C-262-S	2 5/8	3 7/8	7/8	3/8-24 x 1	24.00
CR2C-268-S	2 11/16	4	7/8	3/8-24 x 1	25.00
CR2C-275-S	2 3/4	4	7/8	3/8-24 x 1	24.00
CR2C-281-S	2 13/16	4 1/4	7/8	3/8-24 x 1	29.20
CR2C-287-S	2 7/8	4 1/4	7/8	3/8-24 x 1	29.00
CR2C-293-S	2 15/16	4 1/4	7/8	3/8-24 x 1	26.50
CR2C-300-S	3	4 1/4	7/8	3/8-24 x 1	25.80

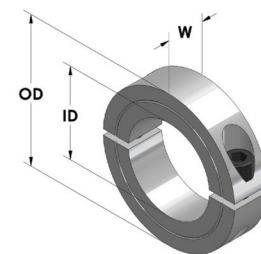


Design fully engages the shaft without marring

Effective on hard and soft shafts

Easily installed where major disassembly would otherwise be required

Greater axial holding power than set screw or one-piece clamping collars



## DIMENSION

Bore, Inch

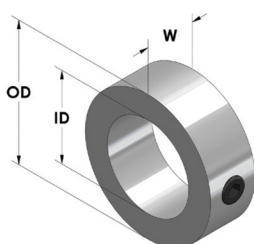
## TOLERANCE

+0.003/-0.000

# CORROSION RESISTANT SET SCREW COLLARS - CRC-SERIES



Traditional cost effective collar design



## DIMENSION

Bore, Inch

## BORE

1/16 to 1/2  
9/16 to 2  
Over 2

## TOLERANCE

+.0005/+.0025  
+.0005/+.0030  
+.0010/+.0040

PART NUMBER	PRODUCT SPECIFICATIONS					
	316 STAINLESS STEEL	BORE SIZE	OD	WIDTH	SET SCREW	APPROX. WEIGHT (OZ.)
CRC-006-S		1/16	1/4	3/16	2-56 x 1/8	0.10
CRC-009-S		3/32	3/8	3/16	6-32 x 1/8	0.10
CRC-012-S		1/8	3/8	1/4	6-32 x 1/8	0.10
CRC-015-S		5/32	7/16	1/4	8-32 x 1/8	0.10
CRC-018-S		3/16	7/16	1/4	8-32 x 1/8	0.10
CRC-025-S		1/4	1/2	5/16	10-32 x 1/8	0.20
CRC-031-S		5/16	5/8	5/16	10-32 x 1/8	0.30
CRC-037-S		3/8	3/4	3/8	1/4-20 x 3/16	0.50
CRC-043-S		7/16	7/8	7/16	1/4-20 x 1/4	0.80
CRC-050-S		1/2	1	7/16	1/4-20 x 1/4	1.10
CRC-056-S		9/16	1	7/16	1/4-20 x 1/4	1.00
CRC-062-S		5/8	1 1/8	1/2	5/16-18 x 1/4	1.50
CRC-068-S		11/16	1 1/4	9/16	5/16-18 x 1/4	2.00
CRC-075-S		3/4	1 1/4	9/16	5/16-18 x 1/4	1.90
CRC-081-S		13/16	1 1/4	9/16	5/16-18 x 1/4	1.70
CRC-087-S		7/8	1 1/2	9/16	5/16-18 x 5/16	2.90
CRC-093-S		15/16	1 1/2	9/16	5/16-24 x 1/4	2.74
CRC-100-S		1	1 1/2	5/8	5/16-24 x 1/4	2.78
CRC-106-S		1 1/16	1 3/4	5/8	5/16-18 x 5/16	4.10
CRC-112-S		1 1/8	1 3/4	5/8	5/16-18 x 5/16	3.90
CRC-118-S		1 3/16	2	11/16	3/8-16 x 3/8	6.10
CRC-125-S		1 1/4	2	11/16	3/8-16 x 3/8	5.70
CRC-131-S		1 5/16	2 1/8	11/16	3/8-16 x 3/8	6.60
CRC-137-S		1 3/8	2 1/8	3/4	3/8-16 x 3/8	6.70
CRC-143-S		1 7/16	2 1/4	3/4	3/8-16 x 3/8	7.60
CRC-150-S		1 1/2	2 1/4	3/4	3/8-16 x 3/8	7.20
CRC-156-S		1 9/16	2 1/2	13/16	3/8-16 x 3/8	10.70
CRC-162-S		1 5/8	2 1/2	13/16	3/8-16 x 3/8	10.10
CRC-168-S		1 11/16	2 1/2	13/16	3/8-16 x 3/8	9.50
CRC-175-S		1 3/4	2 5/8	7/8	1/2-13 x 1/2	11.40
CRC-181-S		1 13/16	2 3/4	7/8	1/2-13 x 1/2	12.70
CRC-187-S		1 7/8	2 3/4	7/8	1/2-13 x 1/2	12.20
CRC-193-S		1 15/16	3	7/8	1/2-13 x 1/2	15.70
CRC-200-S		2	3	7/8	1/2-13 x 1/2	14.90
CRC-206-S		2 1/16	3	7/8	1/2-13 x 1/2	14.90
CRC-212-S		2 1/8	3	7/8	1/2-13 x 1/2	13.30
CRC-218-S		2 3/16	3 1/4	15/16	1/2-13 x 1/2	18.60
CRC-225-S		2 1/4	3 1/4	15/16	1/2-13 x 1/2	17.70
CRC-231-S		2 5/16	3 1/4	15/16	1/2-13 x 1/2	16.80
CRC-237-S		2 3/8	3 1/4	15/16	1/2-13 x 1/2	15.90
CRC-243-S		2 7/16	3 1/2	1	1/2-13 x 1/2	21.80
CRC-250-S		2 1/2	3 1/2	1	1/2-13 x 1/2	20.80
CRC-256-S		2 9/16	3 3/4	1	1/2-13 x 1/2	25.96
CRC-262-S		2 5/8	4	1 1/8	1/2-13 x 1/2	35.49
CRC-268-S		2 11/16	4	1 1/8	1/2-13 x 1/2	34.40
CRC-275-S		2 3/4	4	1 1/8	1/2-13 x 1/2	33.50
CRC-281-S		2 13/16	4	1 1/8	1/2-13 x 1/2	29.70
CRC-287-S		2 7/8	4	1 1/8	1/2-13 x 1/2	29.70
CRC-293-S		2 15/16	4	1 1/8	1/2-13 x 1/2	29.30
CRC-300-S		3	4	1 1/8	1/2-13 x 1/2	27.70



IBT Inc. - Industrial Solutions  
9320 West 55th Street, Merriam, KS 66203  
Ph: (913) 362-5102 [www.ibtinc.com](http://www.ibtinc.com)