

Extreme Duty

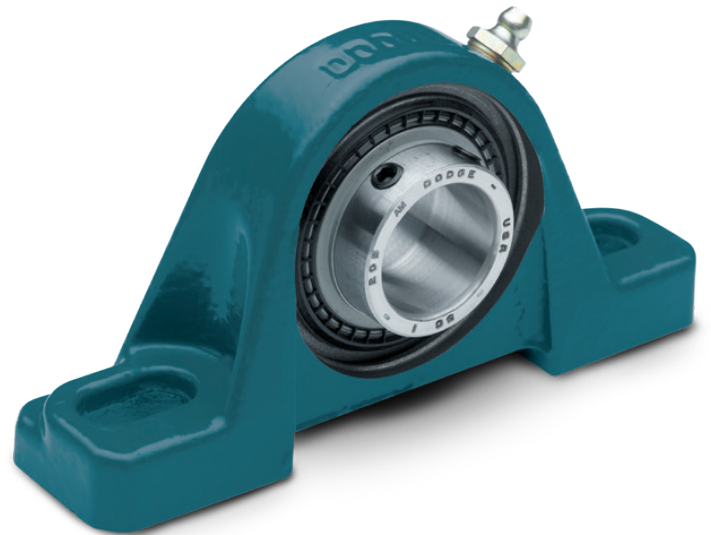
The Dodge Extreme Duty mounted ball bearing offers extended life in the toughest industrial applications.

Extreme Duty outperforms the competition in demanding environments that require highly-engineered products that are long-lasting and will maximize equipment uptime.

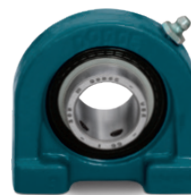
It is designed with a QuadGuard sealing system and a patented Maxlife cage. These unique features are only found in Dodge products and enable Extreme Duty bearings to maintain adequate amounts of clean grease. Extreme Duty is proven and trusted for the job that fits your application needs.

Premium synthetic grease

The Extreme Duty mounted ball bearing uses premium synthetic grease to provide low operating temperatures, extend grease life, and maximize time between re-lubrication.



Extreme Duty is available in multiple housing and shaft attachment options



SC



SXR

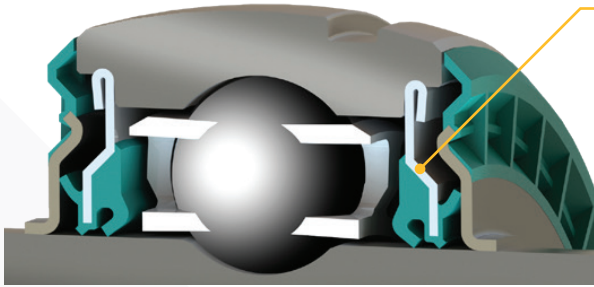


D-LOK

Housing styles	Shaft attachment styles		
	Setscrew (SC)	Eccentric collar (SXR)	Concentric collar (D-LOK)
Pillow block	X	X	X
Two-bolt flange	X	X	X
Four-bolt flange	X	X	X
Tapped base	X	X	X
Piloted flange	X		X
Wide slot take-up	X	X	X
Narrow slot take-up	X		

Extreme Duty bearings

Lubrication retention and contamination prevention lead to long-lasting mounted ball bearings

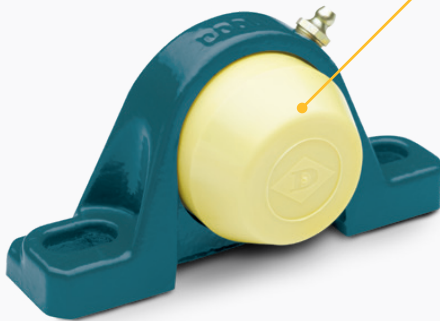
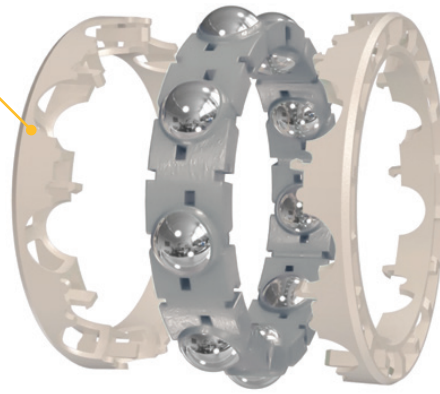


QuadGuard sealing system

- Prevents contamination ingress and maintains clean grease
- Triple-lip seal with two contact points on the inner ring and one contact point on the inner flinger surface
- Rubberized flinger provides additional protection of the seal and forms a grease chamber to block contaminants

Maxlife cage

- Two-piece design that creates a grease compartment around each of the ball elements
- Compartments allow constant grease contact with ball elements to prevent wear and minimize friction that causes heat
- Patented cage holds grease and prevents washouts in extremely wet conditions, decreasing the need for frequent re-lubrication



Snap-on safety end covers

- Creates safe work environments around operating equipment and protects the bearing from contamination
- Made of polymer material to withstand tough environments
- Housing designed with groove to firmly secure cover
- End covers provided in safety yellow for additional protection



Dodge Industrial, Inc.

1061 Holland Road, Simpsonville, SC 29681

+1 864 297 4800

dodgeindustrial.com

Dodge Industrial, Inc. reserves all rights in this document and in the subject matter and illustrations contained therein. We reserve the right to modify contents without prior notice and do not accept responsibility for potential errors or possible lack of information in this document. Dodge Industrial, Inc. Terms and Conditions apply. Any reproduction, disclosure to third parties or utilization of its contents—in whole or in parts—is forbidden without prior written consent of Dodge Industrial, Inc.

© Copyright Dodge Industrial, Inc. All rights reserved. Specifications subject to change without notice.
An RBC Bearings company.

FL1BL01-05.22