



# GUARANTEED TO SAVE TIME AND MONEY

AND REDUCE POTENTIAL INJURIES.

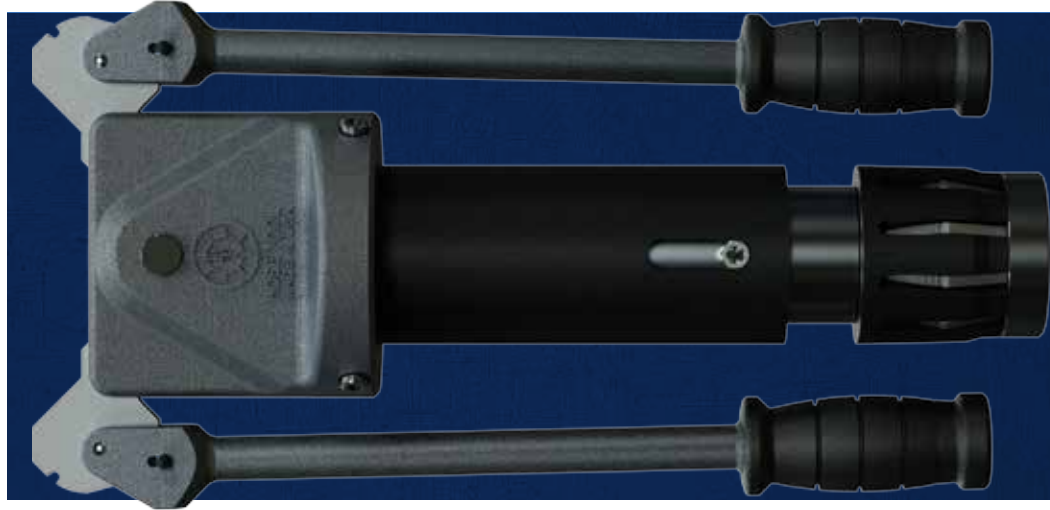
## PT HOSE TOOL

The Hose Tool is an alternative hose assembly tool that requires little effort for quick and safe installation of hose couplings. The proper use of the Hose Tool can save time and reduce damaged fittings and hoses.

## FEATURES & BENEFITS

- Portable - Lightweight aluminum and plastic allow for easy transport for field repairs interchangeable sizes
- Three set screws allow for quick size changes Work Safe
- Protect Fittings - No need to boil hoses and swing sledge hammers
- Ease of Use - Hose Tool design allows for easy centering of fittings for quick hose assembling cast, machined, and assembled in the USA





## PT HOSE TOOL ENGINEERED AND DESIGNED WITH OPERATOR SAFETY AND EFFICIENCY IN MIND

### HOW IT WORKS

To operate simply place the fitting over the insert, put the fitting up to the edge of the hose, and start pumping the arms. PT knows that safety is important, and swinging sledge hammers and boiling hoses is now a thing of the past. Fast and effective, the Hose Tool is a high-quality

product that is proudly made in the USA. Try one out today by contacting your local PT Representative. Pat. No. 9,744,655

*NOTE: The PT Hose Tool is compatible with most industrial hoses. The gripping action gripper could damage certain hoses. Therefore, the PT Hose Tool is not recommended for hoses with thin Fluoropolymer linings, or similar linings, which are most often used in chemical or food grade applications.*



### HOSE TOOL ITEM NUMBERS

Description	Item Number
3" Hose Tool Assembly - 13 LBS	795300A
4" Hose Tool Assembly - 16 LBS	795000A
HT 300 Insert	795300
HT 400 Insert	795400
3" & 4" Hose Tool Set	795005

PT COUPLING COMPANY / TOLL FREE: 800.654.0320 / F: 800-828-2649 / E: INFO@PTCOUPLING.COM / [www.ptcoupling.com](http://www.ptcoupling.com)



Follow us on Twitter: [ptcouplingusa](https://twitter.com/ptcouplingusa)



Like us on Facebook: [ptcoupling](https://www.facebook.com/ptcoupling)

