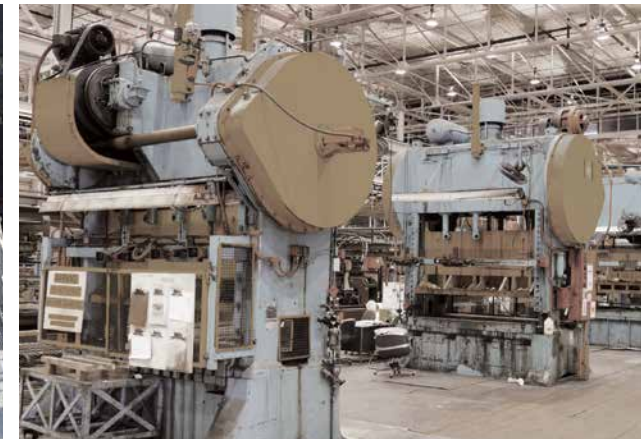




Extended Life™ Constant Pressure Spiral Hose



ContiTech.
Worldwide.
World-class.
World-changing.

ContiTech is a world leader in industrial rubber and plastic products and has the largest global footprint of any rubber products manufacturer. Our knowledge and expertise allows us to deliver the most-innovative and highest-quality products on the market. Plus, our extensive problem solving experience across multiple industries and applications enables us to share innovations over our entire product offering. Which means we can deliver unexpected solutions and advanced improvements in situations where others can't. We push the boundaries of what's possible, and we're constantly solving tomorrow's most challenging problems—today and every day.



Constant Pressure and superior performance.

Our ContiTech Constant Pressure Spiral Hydraulic Hose provides you with the superior quality and reliability you need in the toughest conditions. Our top-of-the-line abrasion resistance and flexibility

in hard-to-reach areas help you avoid downtime while maintaining constant pressure performance.

Plus, our simplified fittings and color-coding systems are faster, safer and more cost-effective for your operation.

When the pressure is on, you want ContiTech there every step of the way.



Specifications:

- › Inner Tube: Oil resistant synthetic rubber
- › Temperature Range: -40°F to 250°F (-40°C to 121°C)
- › Reinforcement: Four or six alternating layers of spiraled high-tensile steel wire
- › Cover: Extra abrasion, oil & weather resistant synthetic rubber

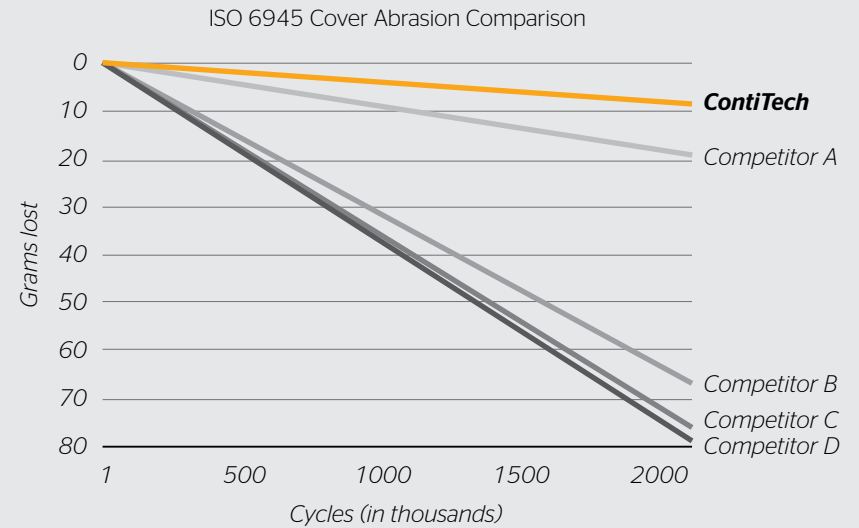
Benefits:

- › 4 Constant Pressure Spiral Hoses: XCP3S, XCP4S, XCP5S, XCP6S
- › Bend radius up to 1/2 that of SAE
- › Flame Resistant MSHA compliant cover
- › Extra abrasion resistance with **Extended Life™**
- › Color-coded pressure range system for easy identification



STAY TOUGH IN THE MOST EXTREME CONDITIONS.

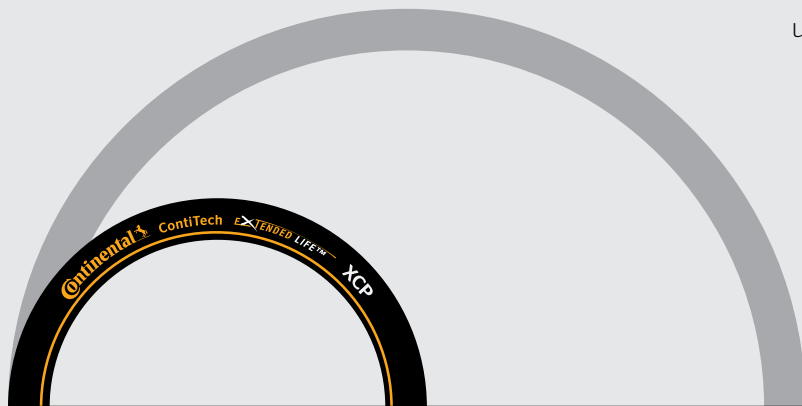
You demand a lot from your hydraulic hose. That's why we put so much into making ours the longest-lasting, strongest, most dependable hose available. Only our constant pressure hose has our exclusive Extended Life™ cover compound, which outperforms the competition in abrasion resistance. It's also MSHA compliant, chemical and oil resistant and performs in even the harshest temperatures and weather conditions.





STAY FLEXIBLE IN EVEN THE TIGHTEST SITUATIONS.

Bend Radius Comparison vs. SAE Standard



Flexibility plays a major role in your hydraulic hose operation and efficiency. With a bend radius up to $\frac{1}{2}$ that of SAE conventional spiral hose standards, our hose is extremely flexible, easier to route and reduces the chance of bending too tightly. This helps provide increased hose savings and a reduction of shaped hose ends while equipping you with a safer, more cost-effective way to keep you moving throughout the day.

Not only does our hose provide a reduced bend radius, but the less-bulky inner tube and outer wall construction requires less force to bend for a more manageable routing process. This results in reduced installer fatigue and faster installation times overall.

ContiTech Constant Pressure Hose is up to a 1/2 SAE bend radius specification

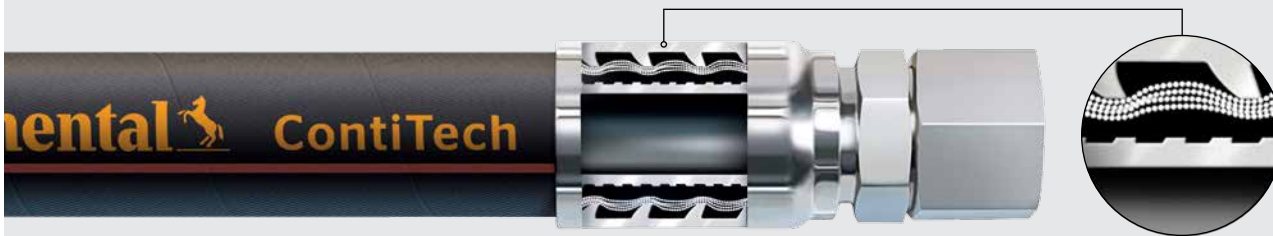


STAY CONNECTED UNDER THE HIGHEST PRESSURES.

ContiLock fittings are constructed from a single piece of steel without brazed or welded joints to provide ultimate protection against leaks and potential leak paths. With full-length crimps and a low-profile design that will last longer, the interlocking Bite-to-Wire technology delivers maximum coupling retention for safer assembly and reliability under the toughest pressure – no internal or external skive required.



Our B2 and SG fittings provide you with size variations simplified into two families so you are confident you choose the proper fitting.



Full-Length Crimp offers maximum coupling retention for a safe and longer lasting assembly.

Our Bite-to-Wire fittings penetrate the cover with a powerful bite into the wire reinforcement, resulting in even hose compression and maximum integrity.



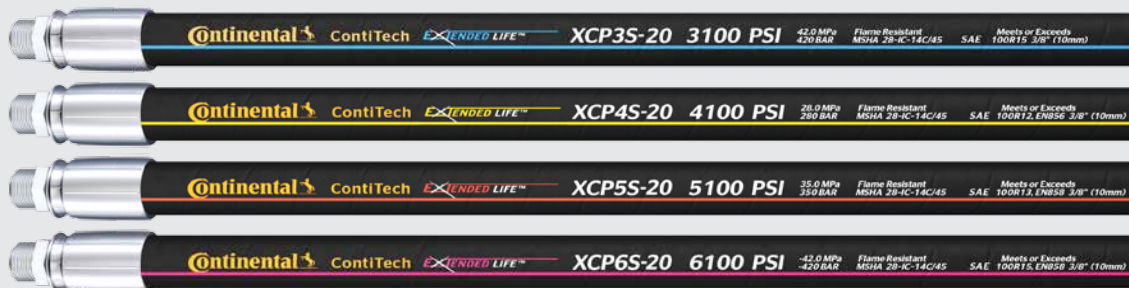
STAY UP, OPERATIONAL AND SAFER ALL DAY.

ContiTech XCP size/pressure quick guide

ID	3/8	1/2	3/4	1	1 1/4	1 1/2	2
3100					XCP3S	XCP3S	XCP3S
4100	XCP4S	XCP4S	XCP4S	XCP4S	XCP4S	XCP4S	XCP4S
5100	XCP5S	XCP5S	XCP5S	XCP5S	XCP5S	XCP5S	XCP5S
6100	XCP6S	XCP6S	XCP6S	XCP6S	XCP6S	XCP6S	XCP6S

- Exceeds SAE 100R12
- Meets or Exceeds SAE100R12 and EN856 4SH
- Meets or Exceeds SAE100R13 and EN856 4SP
- Exceeds SAE 100R13
- Meets or Exceeds SAE100R15 and EN856 4SP
- Exceeds SAE 100R15
- Under Development

Our color-coding system is designed specifically for our hoses and provides a safe and user-friendly replacement process. Quickly recognize which colors align to the different hose pressures to avoid injury and ensure you install the correct hose with confidence.



Extended Life™ Constant Pressure hoses (XCP) are designed to be easily identifiable by pressure rating for safe replacement.

XCP3S Max. working pressure: 3100 psi, 21 MPa Min. burst pressure: 12400 psi, 85 MPa

Product Number	SAP #	Hose Size ID		Hose OD		Min. Bend Radius		Weight lbs./ft.
		in.	mm	in.	mm	in.	mm	
XCP3S-20	20901269	1 1/4	31.5	1.85	47.0	16.5	420	1.70
XCP3S-24	20901671	1 1/2	38.0	2.11	53.5	19.6	500	2.05
XCP3S-32	20901672	2	51.0	2.63	66.7	24.8	630	2.82

XCP4S Max. working pressure: 4100 psi, 28 MPa Min. burst pressure: 16400 psi, 113 MPa

Product Number	SAP #	Hose Size ID		Hose OD		Min. Bend Radius		Weight lbs./ft.
		in.	mm	in.	mm	in.	mm	
XCP4S-06	20854290	3/8	10.0	0.80	20.25	2.6	65	0.40
XCP4S-08	20854291	1/2	12.5	0.94	23.8	3.5	90	0.52
XCP4S-10	20854292	5/8	16.0	1.08	27.4	3.9	100	0.70
XCP4S-12	20854293	3/4	19.0	1.21	30.7	4.7	120	0.99
XCP4S-16	20864021	1	25.0	1.50	38.0	5.9	150	1.20
XCP4S-20	20867345	1 1/4	31.5	1.79	45.5	10.6	270	1.71
XCP4S-24	20867346	1 1/2	38.0	2.11	53.5	13.0	330	2.19
XCP4S-32	20882961	2	51.0	2.59	65.9	24.8	630	3.23

XCP5S Max. working pressure: 5100 psi, 35 MPa Min. burst pressure: 20400 psi, 140 MPa

Product Number	SAP #	Hose Size ID		Hose OD		Min. Bend Radius		Weight lbs./ft.
		in.	mm	in.	mm	in.	mm	
XCP5S-06	20882963	3/8	10.0	0.84	21.4	3.5	90	0.48
XCP5S-08	20879434	1/2	12.5	0.97	24.6	3.5	90	0.58
XCP5S-10	20882965	5/8	16.0	1.11	28.2	4.7	120	0.79
XCP5S-12	20864025	3/4	19.0	1.27	32.2	4.7	120	0.98
XCP5S-16	20867348	1	25.0	1.52	38.7	5.9	150	1.42
XCP5S-20	20879437	1 1/4	31.5	1.79	45.5	10.7	270	1.71
XCP5S-24	20864029	1 1/2	38.0	2.28	57.8	19.6	500	3.35
XCP5S-32	20867503	2	51.0	2.80	71.1	24.8	630	4.76

XCP6S Max. working pressure: 6100 psi, 42 MPa Min. burst pressure: 24400 psi, 168 MPa

Product Number	SAP #	Hose Size ID		Hose OD		Min. Bend Radius		Weight lbs./ft.
		in.	mm	in.	mm	in.	mm	
XCP6S-06	20882967	3/8	10.0	0.84	21.4	3.5	90	0.48
XCP6S-08	20879438	1/2	12.5	0.97	24.6	3.5	90	0.58
XCP6S-10	20889839	5/8	16.0	1.04	26.5	4.7	120	0.73
XCP6S-12	20864030	3/4	19.0	1.27	32.2	4.7	120	1.09
XCP6S-16	20879440	1	25.0	1.53	38.9	5.9	150	1.46
XCP6S-20	20882970	1 1/4	31.5	2.03	51.5	17.5	445	2.41
XCP6S-24	20864033	1 1/2	38.0	2.20	55.8	20.8	530	3.02
XCP6S-32	20880050*	2	51.0	Under Development				

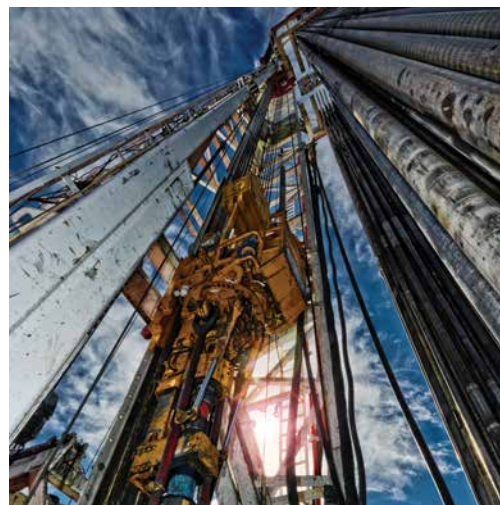
*In development, launching Q4-16





Discover how the exceptional performance, flexibility and abrasion resistance of ContiTech Extended Life™ Constant Pressure Spiral Hydraulic Hose can increase your productivity, uptime and take your operation to a new level.

Contact your local ContiTech representative to learn more. Call 330-664-7000 or visit us at contitech.us.



ContiTech



Contact

ContiTech

North America Headquarters
703 S. Cleveland Massillon Road
Fairlawn, OH 44333-3023 U.S.A.
1-800-235-4632

Canada

1-888-275-4397
FAX 1-888-464-4397

Mexico

1-800-439-7373
FAX 1-800-062-0918

www.contitech.us

ContiTech. Engineering Next Level

As a division of the Continental Group, ContiTech is a recognized innovation and technology leader in natural rubber and plastics. As an industry partner with a firm future ahead of us, we engineer solutions both with and for our customers around the world. Our solutions are specially tailored to meet the needs of the market. With extensive expertise in materials and processes, we are able to develop cutting-edge technologies while ensuring we make responsible use of resources. We are quick to respond to important technological trends, such as function integration, lightweight engineering and the reduction of complexity, and offer a range of relevant products and services. That way, when you need us, you'll find we're already there.

Continental 
The Future in Motion

The content of this publication is not legally binding and is provided as information only. The trademarks displayed in this publication are the property of Continental AG and/or its affiliates. Copyright © 2017 ContiTech AG. All rights reserved. For complete information go to: www.contitech.de/disc1_en